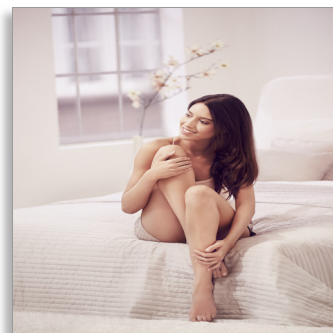




Philips Lumea Essential
IPL - Hair regrowth
prevention

For use on body and face

16 minutes to treat lower legs
>200,000 lamp flashes
Compact corded design



BRI861/80



Easy, long term hair reduction

Philips Lumea Essential works wonders to prevent the reappearance of hair on face and body. Gentle pulses of light, applied regularly, keep skin silky-smooth every day.

Long lasting hair removal with IPL technology

- Adapted for safe use in the comfort of your own home
- Enjoy smooth skin every day
- Effortlessly effective
- Suitable for different hair and skin types

Safe and effective on face and body

- Safe and effective even on sensitive areas
- 25% faster for shorter treatment time*
- Skin Tone Sensor
- Five adjustable light energy settings
- Gentle on your skin

Maximum freedom, minimum hassle

- Slide and Flash mode for a more convenient application
- No replacement parts, no hidden costs

PHILIPS

IPL - Hair regrowth prevention

For use on body and face 16 minutes to treat lower legs, >200,000 lamp flashes, Compact corded design

BRI861/80

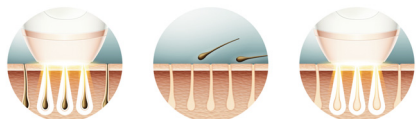
Highlights

IPL technology



Philips Lumea uses an innovative light-based technology called IPL (Intense Pulsed Light), derived from the technology used in professional beauty salons. Philips has adapted this technology for effective use in the safety and comfort of your own home. Philips worked closely with skin experts to develop this technology. For more than 10 years Philips carried out extensive consumer research on IPL technology with more than 2000 women.

Enjoy smooth skin every day



Philips Lumea applies gentle pulses of light to the hair root. As a consequence, the amount of hair your body grows gradually decreases. Repeating the treatment leaves your skin beautifully hair free and touchably smooth.

Effortlessly effective



Our clinical studies have shown significant hair reduction in as little as four bi-weekly treatments resulting with smooth hair free skin. To maintain these results, simply repeat the treatment when needed. Time between treatments may vary based on your individual hair regrowth. - To enlarge this picture, please click on the image in the image gallery on the top of this page

Suitable hair and skin types

Suitable body hair colours



Suitable skin tones



Philips Lumea works effectively on (naturally) dark blonde, brown and black hairs. As with other light-based treatments, Philips Lumea is NOT effective on red, light-blond or white/grey hair. This product is also NOT suitable for dark skin.

Application areas



Use with confidence to remove hair on face (upper lip, chin) and body parts including legs, arm pits, bikini area, belly and arms.

Skin Tone Sensor



For extra safety the integrated skin tone sensor measures the treated skin complexion at the beginning of each session and occasionally during the session. If it detects a skin tone that is too dark for this product it will automatically stop emitting pulses.

5 light energy settings



Philips Lumea has five adjustable light energy settings to ensure gentle but effective treatment. Used correctly, Philips Lumea's IPL treatment is safe and gentle to use even on sensitive skin and sensitive body areas.

25% faster*



Larger window with optimized design for faster treatment and better visibility*

Gentle treatment



Gentle on your skin

Specifications

Application areas

- Body areas: Arms, Legs, Belly, Bikini, Armpits
- Face areas: Chin, Sideburns, Upper lip

Application mode

- Slide and Flash: For easy motion application
- Corded / cordless use: Corded
- Stamp and Flash: For treatment on curvy areas

Application time

- Armpit: 1,5 min
- Bikini line: 1,5 min
- Face areas: 2 min
- Lower leg: 8 min

Items included

- Adapter: 12V / 550mA, 400V / 60W
- Instructions for use: User manual

Power

- Voltage: 100-240 V

Safety and adjustable settings

- Integrated UV filter: Protects skin from UV light
- 5 light energy settings: Adjustable to your skin type
- Integrated safety system: Prevent unintentional flashing
- Skin Tone Sensor: Detects your skin tone

Service

- Warranty: 2 years global warranty

Technical specifications

- High performance lamp: Delivers > 200,000 flashes
- Light fluence (J/cm²): 1.8-4.0
- Light spectrum: >530 nm



Issue date 2016-01-12

Version: 1.2.1

© 2016 Koninklijke Philips N.V.
All Rights reserved.

Specifications are subject to change without notice.
Trademarks are the property of Koninklijke Philips N.V.
or their respective owners.

www.philips.com

* versus SC1981, SC1982, SC1983 and SC1984