

Lenovo® recommends Windows 8.

**lenovo**® **FOR**  
**THOSE**  
**WHO DO.**™

# LENOVO MIIX 2 11 inch

**Work, relax and play with 3 modes in 1 simple device**

The Lenovo® MIIX 2 provides on-the-go productivity in Laptop Mode, comfortable viewing in Stand Mode, and handy entertainment with Tablet Mode. While the detachable AccuType Keyboard-dock makes switching modes seamless, the latest processor technology and premium audio ensure top multimedia performance.



Laptop Mode



Stand Mode



Tablet Mode

WHY BUY  
A MIIX 2?



## 1 MULTIMODE

- **Laptop Mode** – Be more productive at home, in the office or on the road
- **Stand Mode** – Enjoy your favorite movies, music and video chat with ease
- **Tablet Mode** – Scroll through content in a flash, read ebooks, view photos and play games

## 2 FHD DISPLAY

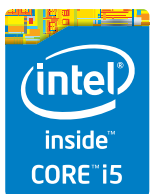
Games, movies and everyday computing comes alive with high resolution clarity

## 3 PREMIUM AUDIO

Enhance your music experience with the integrated JBL® designed stereo speakers with subwoofer

0800 123 1234

WWW.LENOVO.COM



Lenovo® recommends Windows 8.

**lenovo** **FOR**  
**THOSE**  
**WHO DO.**™

## SPECIFICATIONS

## PERFORMANCE

**Processor**  
 Intel® Core™ i3-4012Y (1.5 GHz)  
 Intel® Core™ i5-4202Y (1.6 GHz)

**Operating System**  
 Windows 8.1

**Graphics**  
 Integrated Intel® HD graphics

**Memory**  
 Up to 8GB DDR3L (on board)

**Camera**  
 2MP front / 5MP rear

**Storage**  
 Up to 256 SSD  
 (with 2TB add-on Micro SD Card support)

**Audio**  
 Integrated JBL® stereo speakers with subwoofer

**Battery**  
 36 Wh  
 Up to 6 hours WiFi browsing / 5 hrs FHD  
 1080p playback

## DESIGN

**Display**  
 11.6" FHD (1920 x 1080) display

**Dimensions (W x D x H)**  
 11.88" x 7.48" x 0.43"  
 (302 mm x 190 mm x 11 mm (tablet only))

**Weight**  
 800 g (tablet only)

## CONNECTIVITY

**Bluetooth\***  
 Bluetooth 4.0, 802.11 a/b/g/n WiFi, 3G and GPS\*

**Connectors**  
 2 x USB 2.0, Micro-SD, Micro-SIM, Micro-HDMI  
 Audio Combo Jack

## SOFTWARE

**Security and Support**

- McAfee® Internet Security (30-day free trial)
- Lenovo VeriFace® Pro
- Lenovo Companion

**Entertainment**

- Zinio® Online Newsstand
- Skype™
- Amazon Kindle for PC

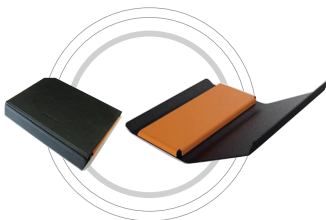
**Productivity**

- Microsoft Office 365 Home Premium (30-day trial)
- Lenovo® Cloud Storage
- Evernote®

\* Optional



## ACCESSORIES



Folio Case

Protective  
screen-film

## LENOVO SERVICES

**Warranty Upgrades – Onsite/  
In-Home Service**  
 Maximizes PC uptime and  
 productivity by providing  
 convenient, fast repair services  
 in your own home

**Accidental Damage Protection**  
 Avoid the hassles of unexpected  
 repair costs. Provides coverage  
 for non-warranted damage  
 incurred under normal operating  
 conditions, such as minor  
 spills, drops or damage to the  
 integrated screen.

**Warranty Extensions  
(1-to-3 Years Total Duration)**  
 This fixed-term, fixed-cost  
 service helps accurately budget  
 for PC expenses, protect  
 your valuable investment and  
 potentially lower the cost  
 of ownership over time.

**PART NUMBER XXXXX**  
**PRICE: XXX**

0800 123 1234

WWW.LENOVO.COM



Lenovo makes every effort to ensure accuracy of all information but is not liable or responsible for any editorial, photographic or typographic errors. All images are for illustrative purposes only. Lenovo product specifications: For full Lenovo product specifications visit [www.lenovo.com](http://www.lenovo.com) Lenovo makes no representations or warranties regarding third party products or services. **Trademarks:** The following are trademarks or registered trademarks of **Lenovo**: Lenovo, the Lenovo logo, IdeaPad, OneKey, VeriFace and New World. New Thinking. Microsoft, Windows and Vista are registered trademarks of Microsoft Corporation in the U.S. or other countries. Intel, the Intel logo, Centrino, Centrino Inside, Intel Core and Core Inside are trademarks of Intel Corporation in the U.S. and other countries. Other company, product and service names may be trademarks or service marks of others. Battery life (and recharge times) will vary based on many factors including system settings and usage. A description of the environment under which the test was performed is available upon request. ©2014 Lenovo.

