

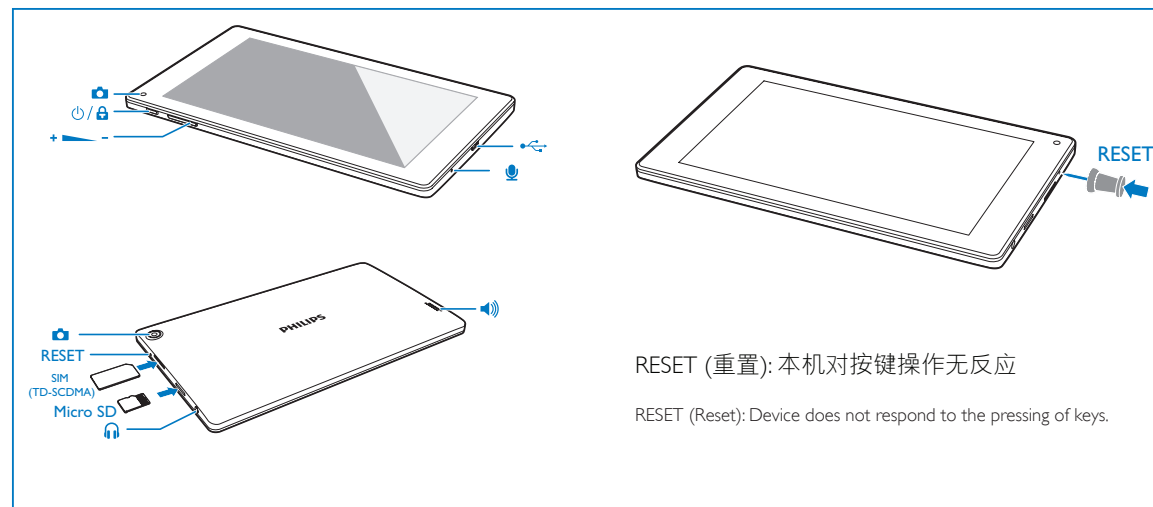
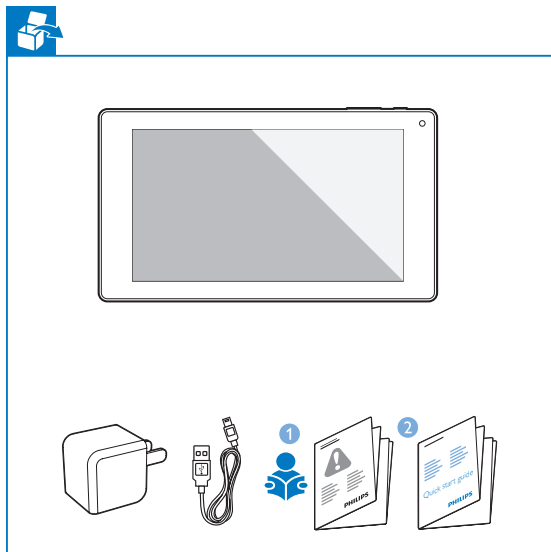
快速入门指南

Register your product and get support at www.philips.com/support



2014 ©WOOX Innovations Limited. All rights reserved. This product has been manufactured by, and is sold under the responsibility of WOOX Innovations Ltd., and WOOX Innovations Ltd. is the warrantor in relation to this product. Philips and the Philips Shield Emblem are registered trademarks of Koninklijke Philips N.V. and are used under license from Koninklijke Philips N.V.

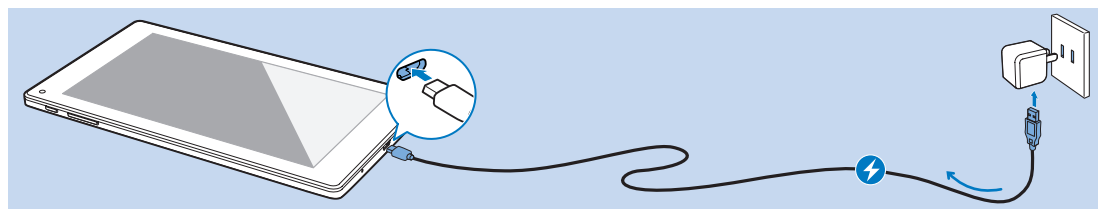
PI3205G_93_QSG_V2.0_WK1426.3



RESET (重置): 本机对按键操作无反应

RESET (Reset): Device does not respond to the pressing of keys.

充电 Charge

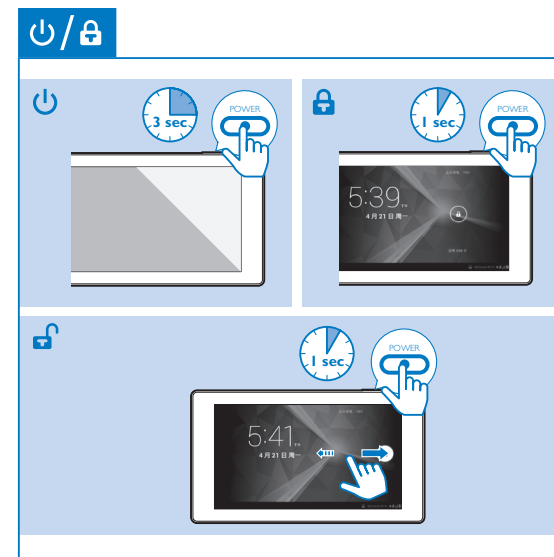


首次使用本机时，应使用随机所附的电源适配器为
本机充电6小时以上。

The first time you use the device, use the by-packed power adapter to
charge the device for more than six hours.

注：当本机电量完全耗尽时，液晶显示屏即使在本
机接入充电器后仍会因电池电量低而无法启动。请
为本机充电至少30分钟后再次开机。

Tips: When battery of the device is over-drained, the LCD display may
not be turned on due to low battery level even when charger is con-
nected. Charge the device for at least 30 minutes before you switch the
device on again.



页面导航 Navigate

在主屏幕 On the Home screen



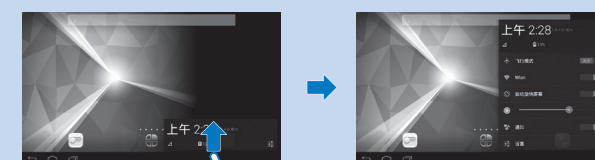
- 左右滑动选择页面
- 在网络或本机上搜索
- 进入主屏幕
- 返回上层菜单或退出
- 选择最近使用过的应用程序

- Swipe left/ right to select a page.
- Search in the web or the device
- Go to the Home screen
- Back one level or exit
- Switch to recent applications



- 进入设置菜单
- 查看所有应用
- 进入网络浏览器

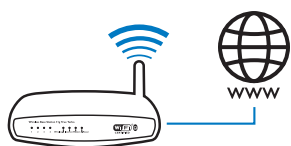
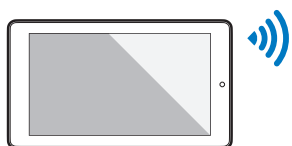
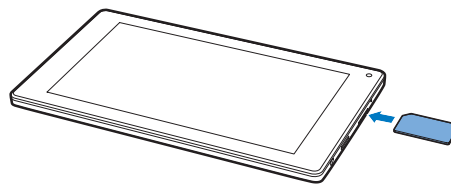
- Go to the setting menu
- Find all the apps
- Go to the web browser



上拉查看状态、事件或
选择设置选项。
Pull up to check status, events,
and select setup options.

点击选择设置选项。
Tap to select setup options

连接互联网 Connect to the Internet



你可经由Wi-Fi将本机接入互联网。在弹出屏幕选择设置选项，点击开启Wi-Fi并接入可用的网络。

You can connect PI3205G to the Internet through Wi-Fi. On the pop-up screen for setup options, tap to switch on Wi-Fi and connect to an available network.

你也可使用SIM卡(TD-SCDMA)经由移动网络将本机接入互联网。

With the SIM card (TD-SCDMA), you can also connect PI3205G to the Internet through the mobile network.

在该小部件中，点击 或 开启、关闭无线Wi-Fi连接或移动网络连接。

In the widget, press or to switch on or off the connection to Wi-Fi or mobile network.

安卓市场 HiMarket



进入 搜索、下载、安装应用。

Go to to search for, download, and install applications.

注：安卓市场为开放平台，应用开发者均可在此发布其应用。安卓市场所提供的应用的兼容性及其运行性能可因应用开发者的不同而有所不同。

Notes: HiMarket is an open platform for apps developers to promote their applications. Compatibility and quality of execution of apps in HiMarket may vary from developers to developers.

提示：在使用App应用时，可完全退出其它App应用以使运行更为流畅。点击 ，然后上拉其它App应用以完全退出。

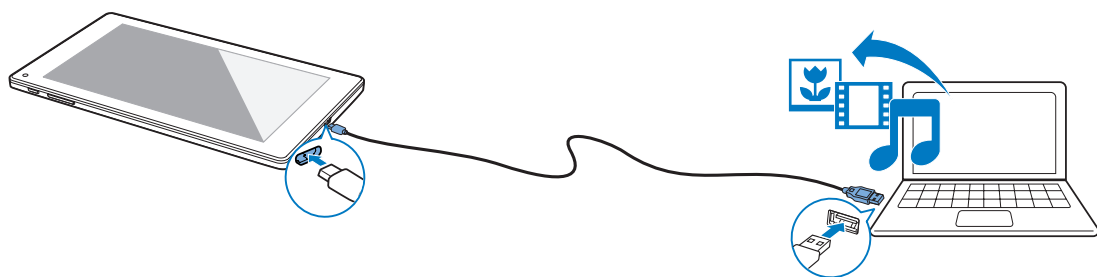
Tip: For quicker access to an app, exit other apps completely. Tap and then, drag up the apps to exit completely.



安卓市场简介：“安卓市场HiMarket”是国内最大的Android社区，也是中国大陆地区最大的第三方市场，目前用户已经超过2000万，收录20万余款应用。全局手势支持，二维码扫描直接下载软件，注册即可轻松使用云推送功能，炫酷大方的界面，各种给力的功能，尽在最大最全的“安卓市场”！

安卓网介绍：“安卓网”成立于2009年3月，是国内最大最活跃的Android玩家社区，已有1000万用户注册加入。拥有安卓论坛——分享新机、潮机心得体验；安卓市场——数万款游戏/应用任你下载，更可以直接推送到手机；安卓资讯——Android盛会、新机发布、试玩体验，统统一网打尽；更有主体、音乐、壁纸下载频道！享受安卓智能，尽在安卓网。www.hiapk.com

连接电脑 Connect to your PC



使用USB数据线将本机连接至电脑。你可在本机与电脑之间传输应用和媒体文件。

Use the USB cable to connect PI3205G to a PC. You can drag and drop apps and media files between PI3205G and the PC.

A. 选择语言 Select languages



i 更多信息 More information



如需阅读用户手册，请在 安卓市场下载安装PDF阅读器，然后请转到 找到PDF阅读器。如需获取有关支持信息，请登录 www.philips.com/support。

To read the User Manual, download and install a PDF reader from HiMarket, and then go to to find the PDF reader. Go to www.philips.com/support for support information.