

Always there to help you

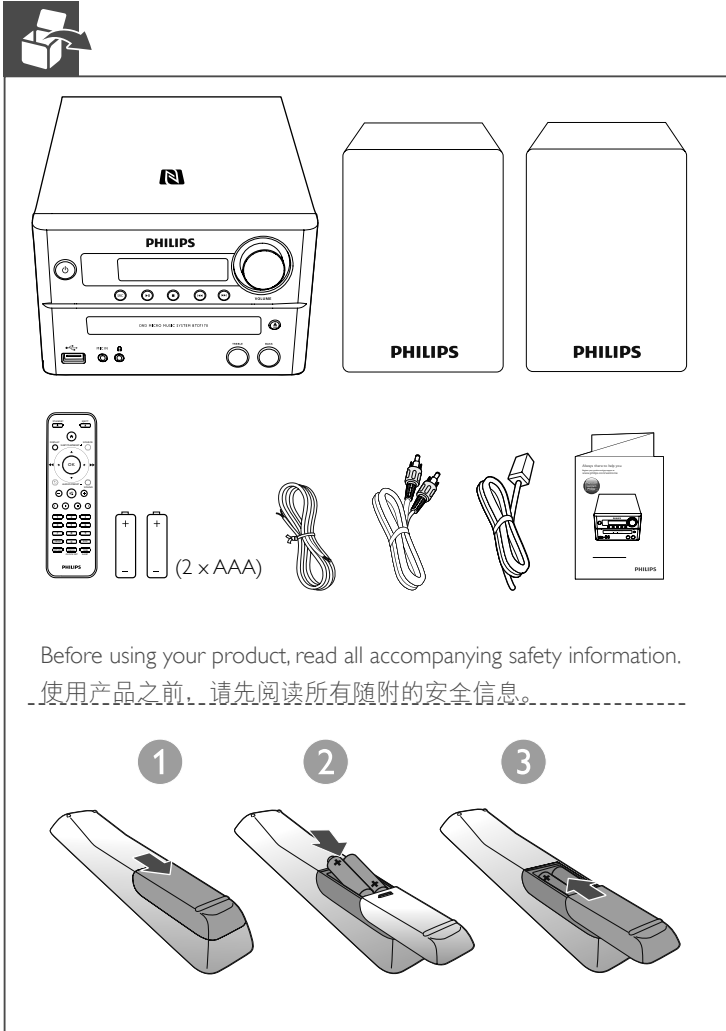
Register your product and get support at
www.philips.com/support

Question?
Contact
Philips

BTD7170

EN Short User Manual
ZH-CN 简明用户手册

PHILIPS



Before using your product, read all accompanying safety information.
使用产品之前, 请先阅读所有随附的安全信息。

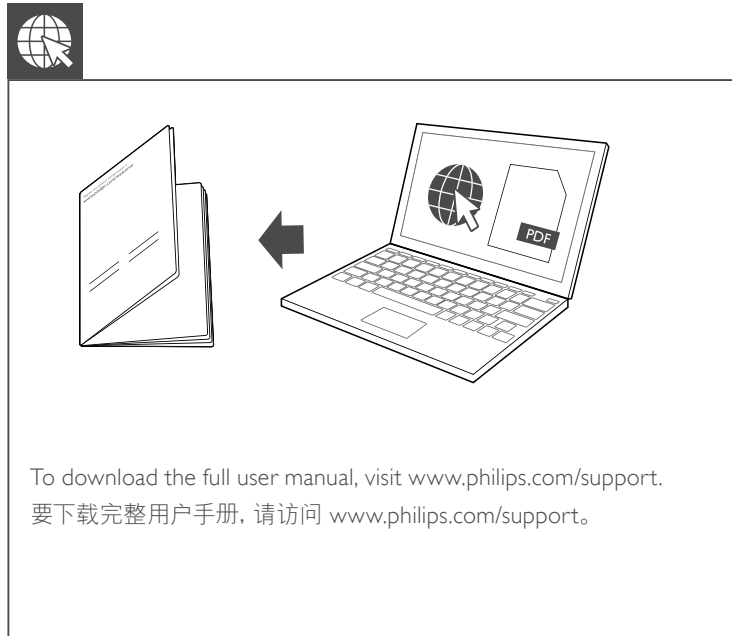
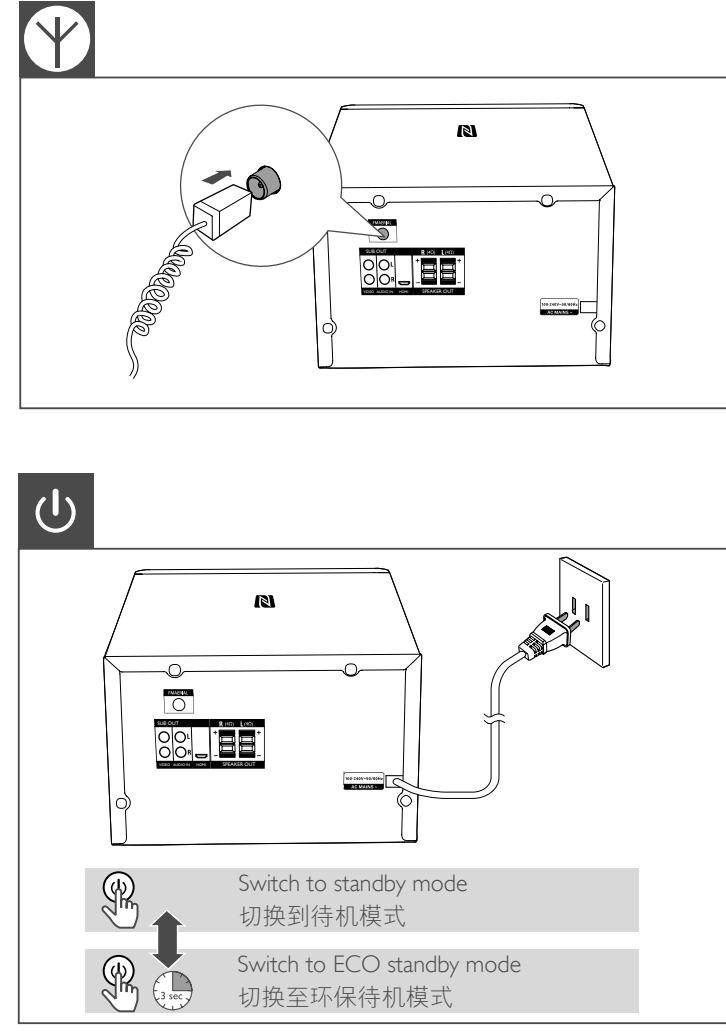
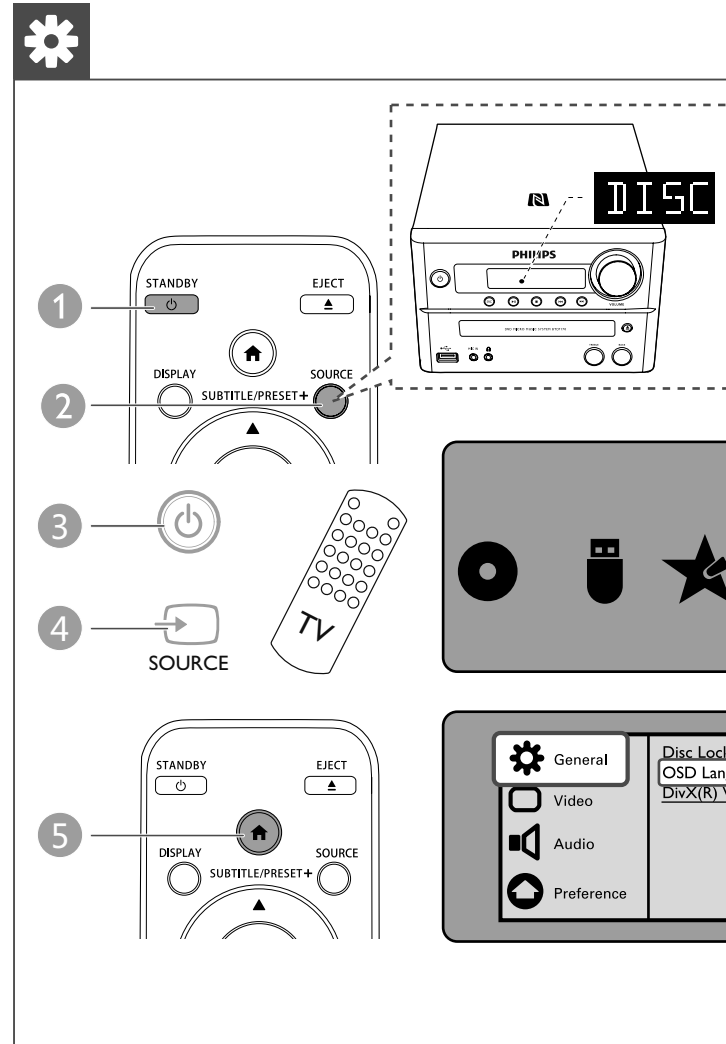
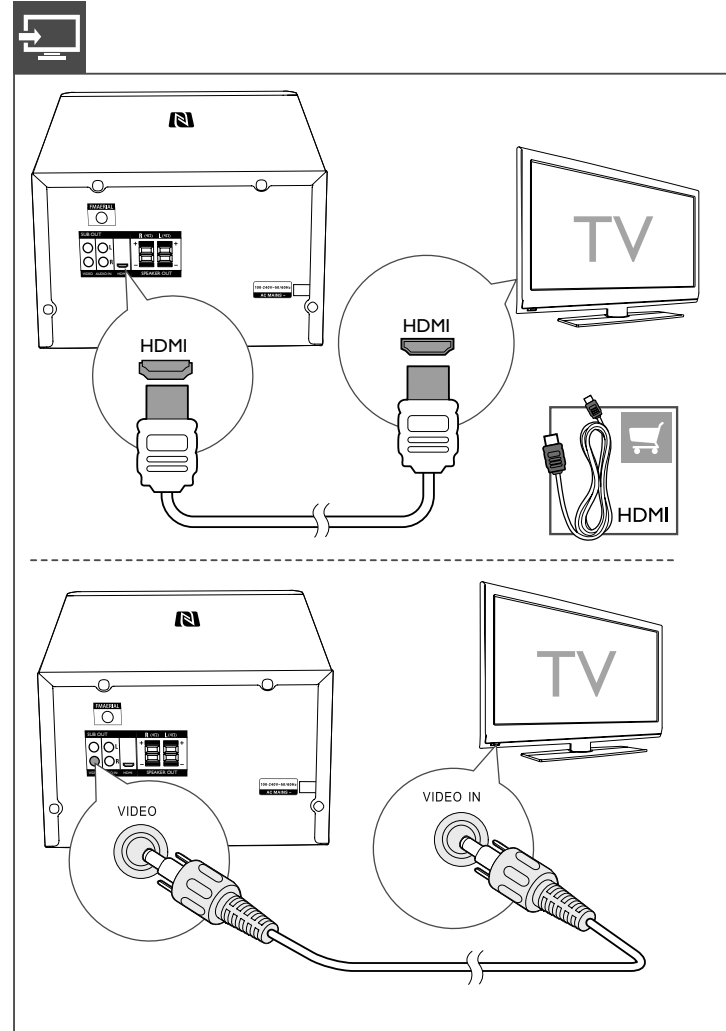
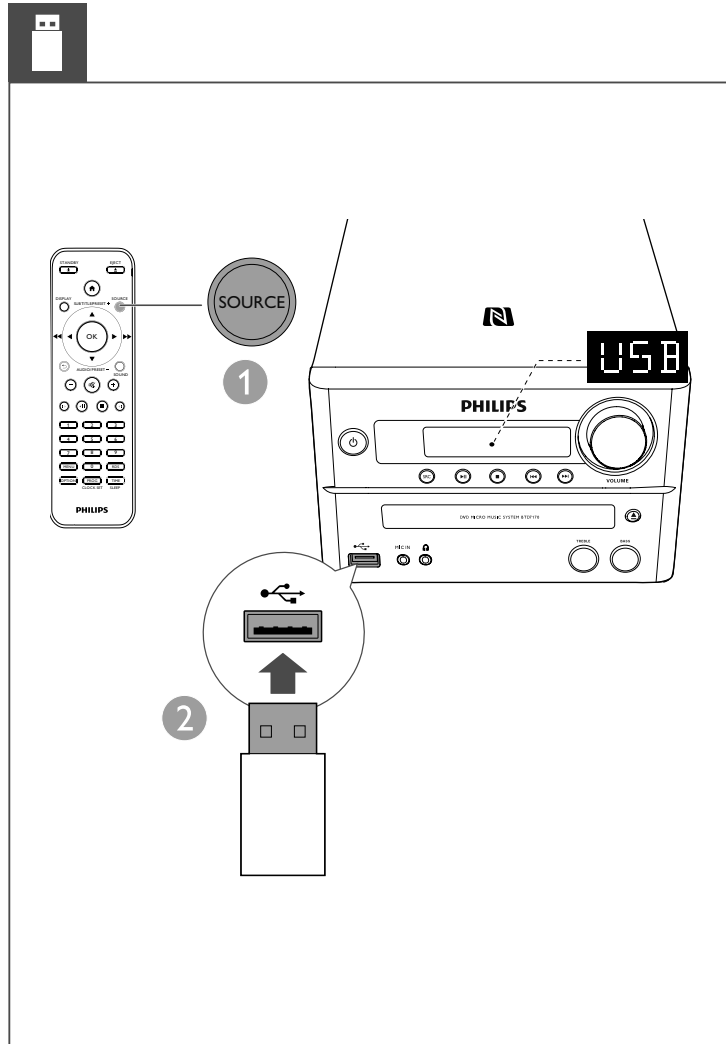
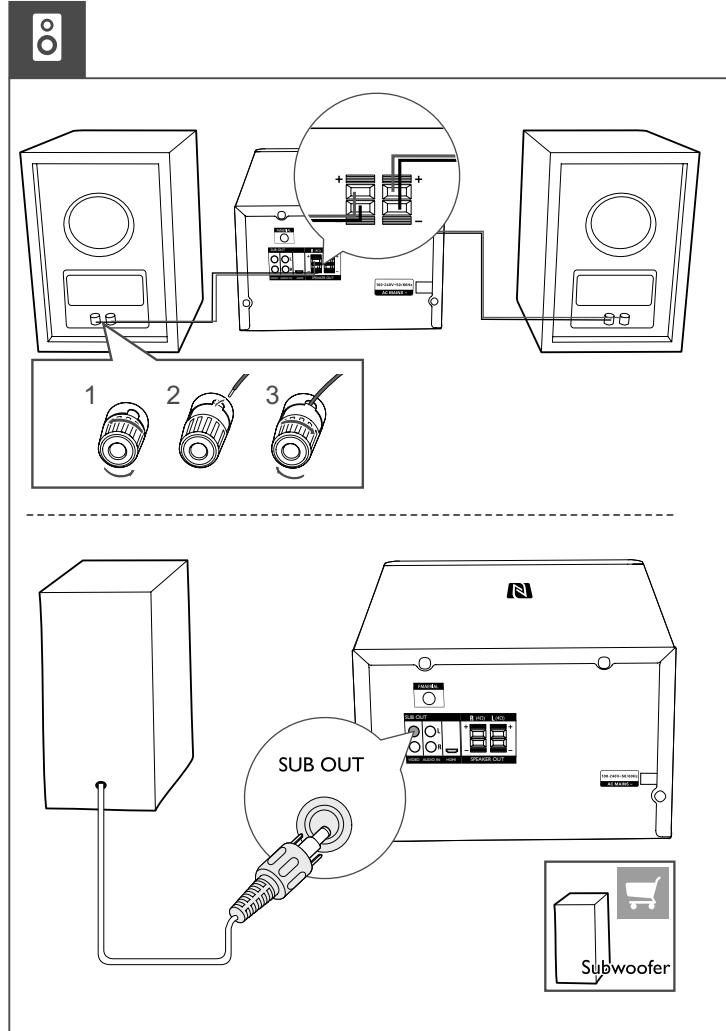


You can play DVD discs marked with the following region code:

DVD region code	Countries
1	China

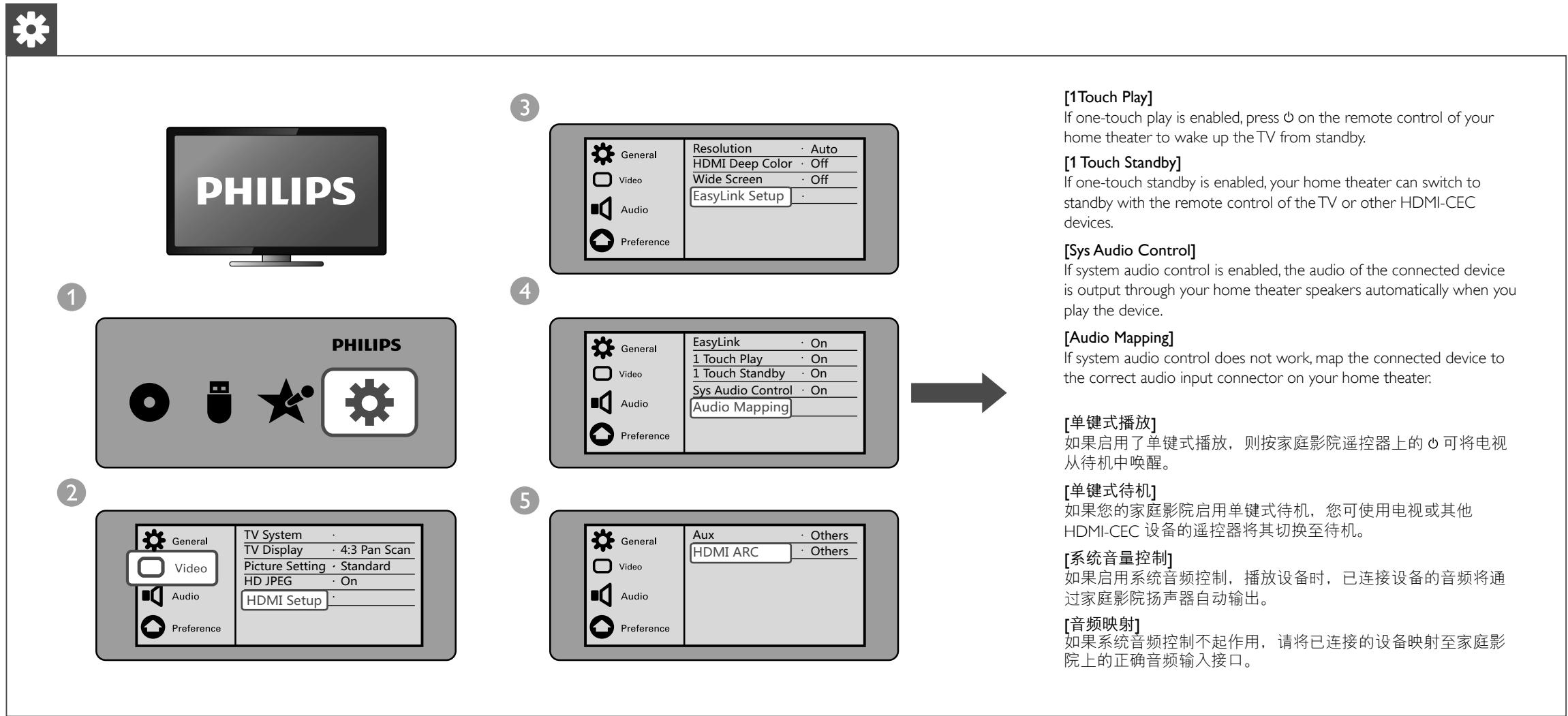
您可播放标有以下区域码的 DVD 光盘:

DVD 区域码	国家/地区
1	中国大陆



Specifications are subject to change without notice.
2014 © WOOK Innovations Limited.
All rights reserved.
Philips and the Philips' Shield Emblem are registered
trademarks of Koninklijke Philips N.V. and are used by WOOK
Innovations Limited under license from Koninklijke Philips N.V.

BTD7170_93_Short User Manual_V4.0



[1Touch Play]

If one-touch play is enabled, press **Q** on the remote control of your home theater to wake up the TV from standby.

[1 Touch Standby]

If one-touch standby is enabled, your home theater can switch to standby with the remote control of the TV or other HDMI-CEC devices.

[Sys Audio Control]

If system audio control is enabled, the audio of the connected device is output through your home theater speakers automatically when you play the device.

[Audio Mapping]

If system audio control does not work, map the connected device to the correct audio input connector on your home theater.

[单键式播放]

如果启用了单键式播放, 则按家庭影院遥控器上的 **Q** 可将电视从待机中唤醒。

[单键式待机]

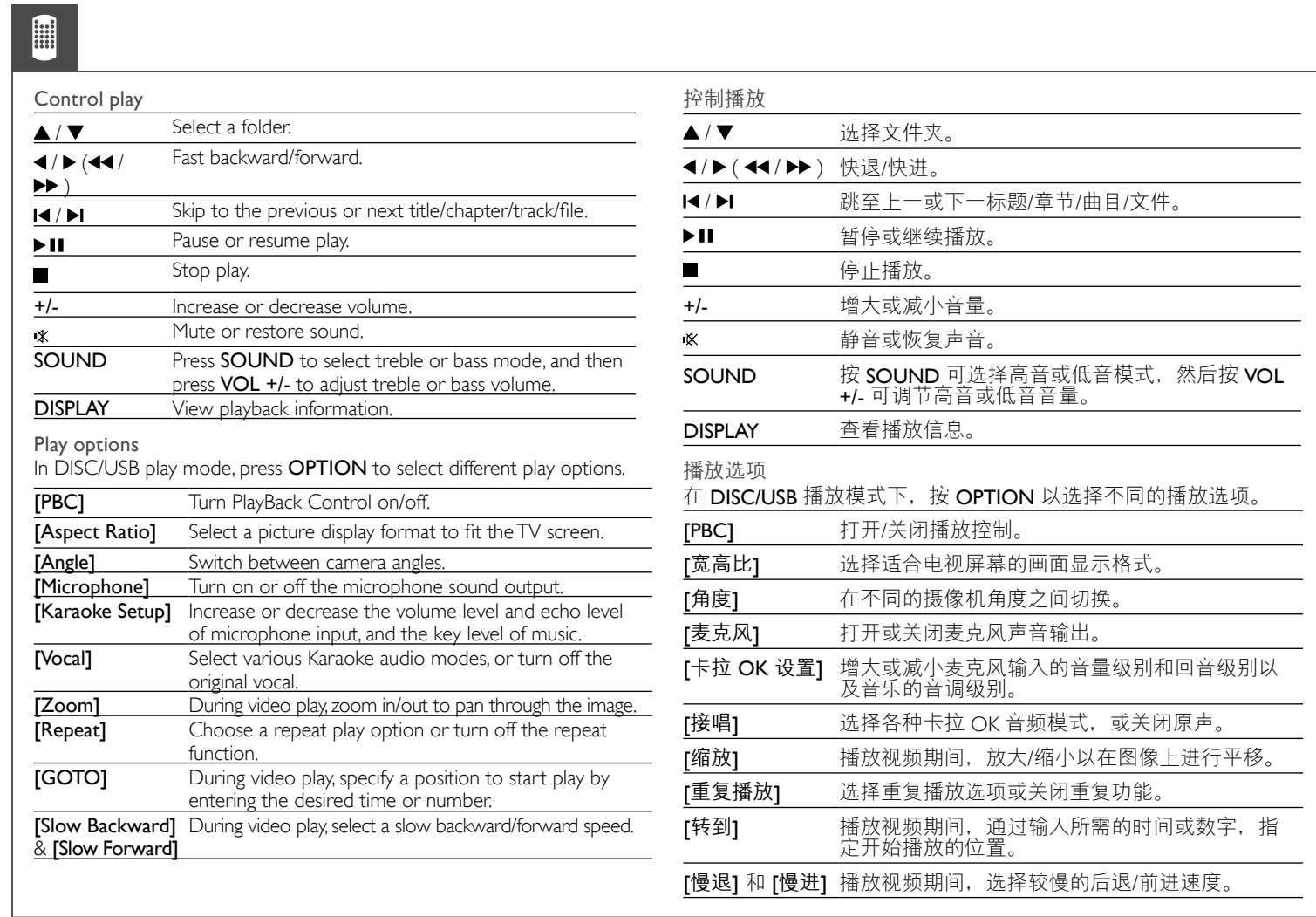
如果您的家庭影院启用单键式待机, 您可使用电视或其他 HDMI-CEC 设备的遥控器将其切换至待机。

[系统音量控制]

如果启用系统音频控制, 播放设备时, 已连接设备的音频将通过家庭影院扬声器自动输出。

[音频映射]

如果系统音频控制不起作用, 请将已连接的设备映射至家庭影院上的正确音频输入接口。



Control play

▲/▼	Select a folder.
◀/▶(◀/▶)	Fast backward/forward.
◀/▶	Skip to the previous or next title/chapter/track/file.
⏮	Pause or resume play.
■	Stop play.
+/-	Increase or decrease volume.
⏸	Mute or restore sound.
SOUND	Press SOUND to select treble or bass mode, and then press VOL +/- to adjust treble or bass volume.
DISPLAY	View playback information.

Play options

In DISC/USB play mode, press **OPTION** to select different play options.

[PBC]	Turn PlayBack Control on/off.
[Aspect Ratio]	Select a picture display format to fit the TV screen.
[Angle]	Switch between camera angles.
[Microphone]	Turn on or off the microphone sound output.
[Karaoke Setup]	Increase or decrease the volume level and echo level of microphone input, and the key level of music.
[Vocal]	Select various Karaoke audio modes, or turn off the original vocal.
[Zoom]	During video play, zoom in/out to pan through the image.
[Repeat]	Choose a repeat play option or turn off the repeat function.
[GOTO]	During video play, specify a position to start play by entering the desired time or number.
[Slow Backward] & [Slow Forward]	During video play, select a slow backward/forward speed.

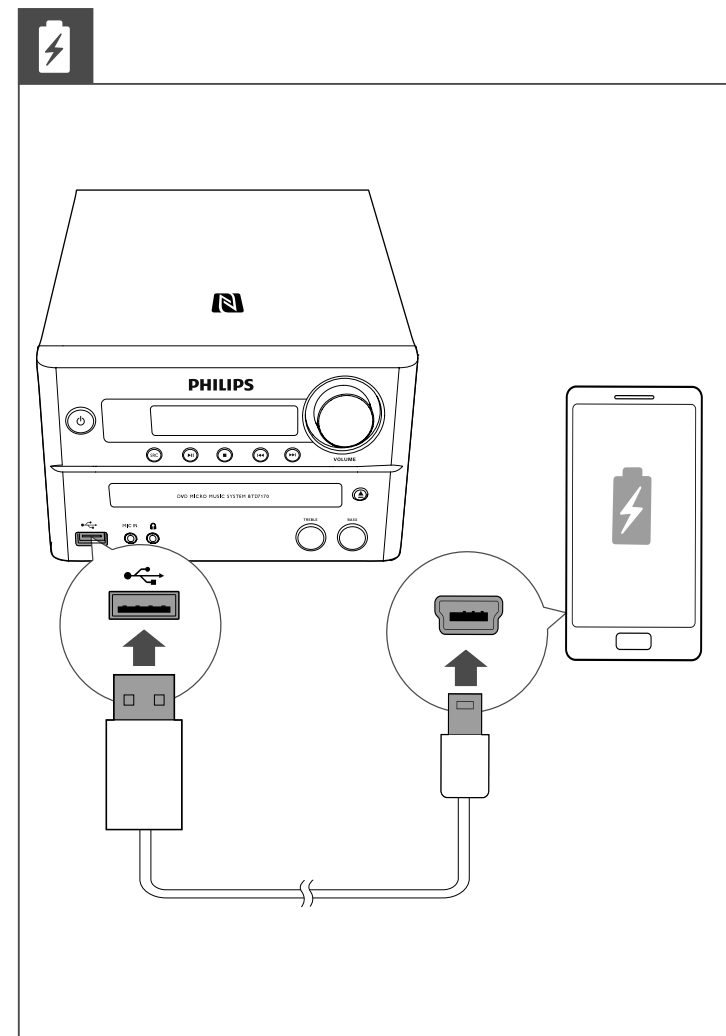
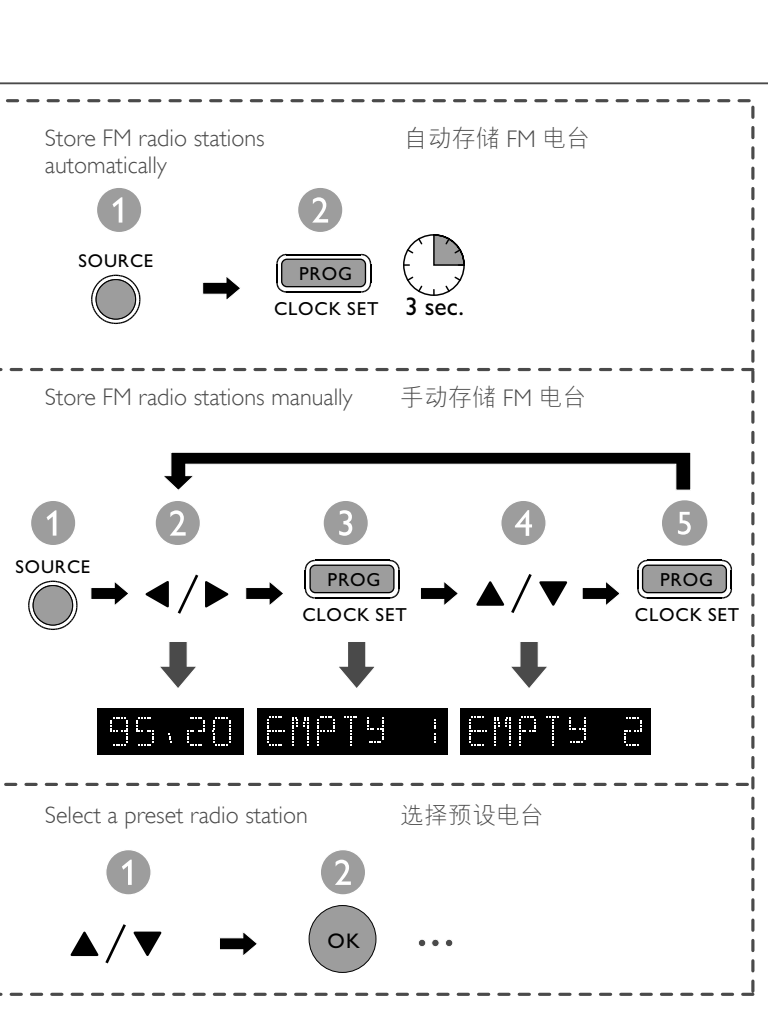
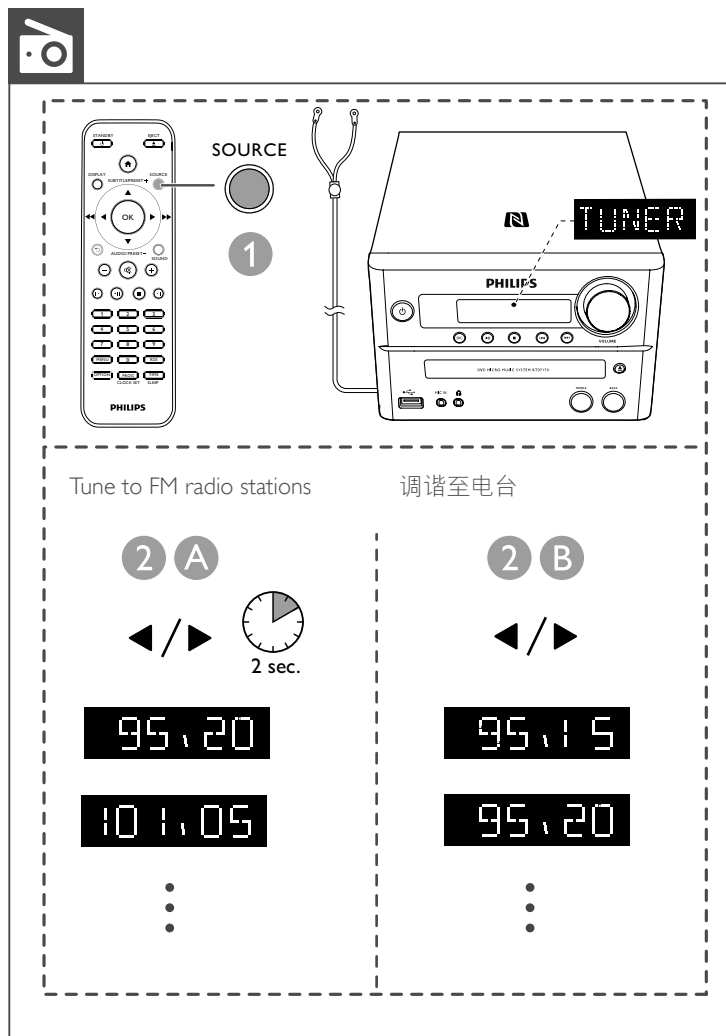
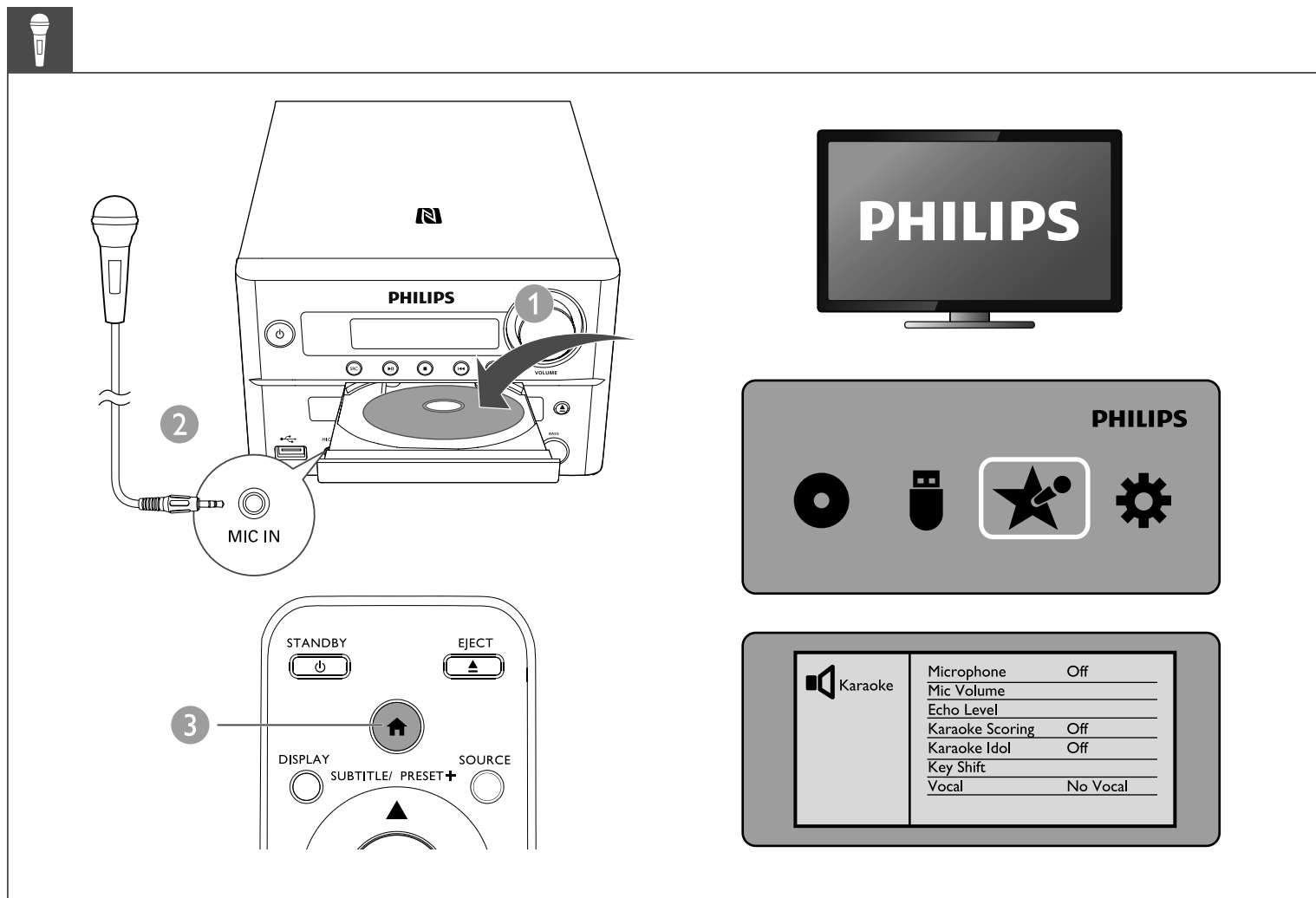
控制播放

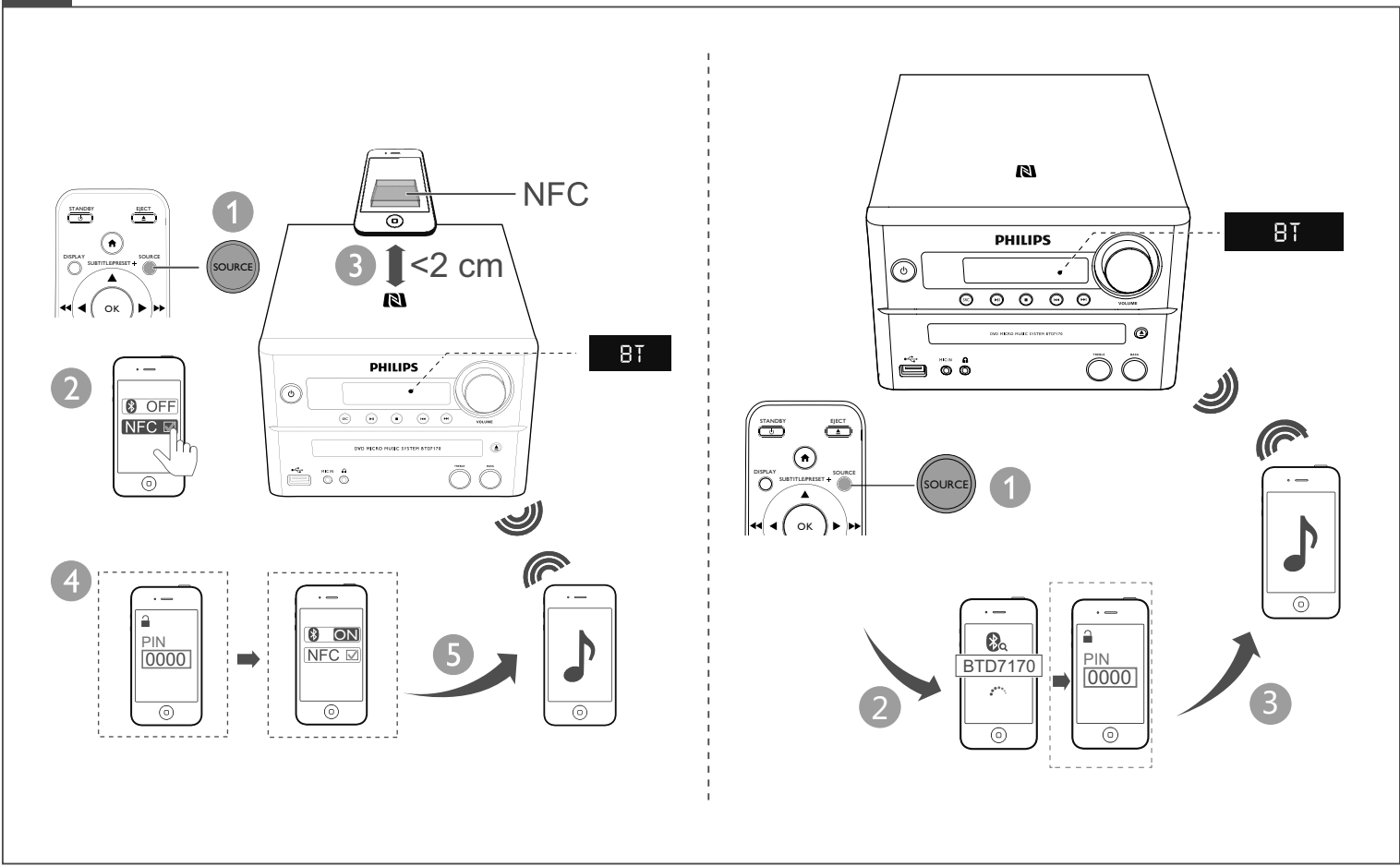
▲/▼	选择文件夹。
◀/▶(◀/▶)	快退/快进。
◀/▶	跳至上一或下一标题/章节/曲目/文件。
⏮	暂停或继续播放。
■	停止播放。
+/-	增大或减小音量。
⏸	静音或恢复声音。
SOUND	按 SOUND 可选择高音或低音模式, 然后按 VOL +/- 可调节高音或低音音量。
DISPLAY	查看播放信息。

播放选项

在 DISC/USB 播放模式下, 按 **OPTION** 以选择不同的播放选项。

[PBC]	打开/关闭播放控制。
[宽高比]	选择适合电视屏幕的画面显示格式。
[角度]	在不同的摄像机角度之间切换。
[麦克风]	打开或关闭麦克风声音输出。
[卡拉 OK 设置]	增大或减小麦克风输入的音量级别和回音级别以及音乐的音调级别。
[接唱]	选择各种卡拉 OK 音频模式, 或关闭原声。
[缩放]	播放视频期间, 放大/缩小以在图像上进行平移。
[重复播放]	选择重复播放选项或关闭重复功能。
[转到]	播放视频期间, 通过输入所需的时间或数字, 指定开始播放的位置。
[慢退] 和 [慢进]	播放视频期间, 选择较慢的后退/前进速度。





Specifications	规格
Total Output Power	100 W
Speaker Impedance	4 ohm
Speaker Driver	5.25" woofer + 25 mm tweeter
Speaker Sensitivity	>84 dB/mW
Disc Diameter	12 cm/8 cm
USB Direct Version	2.0 full speed
USB Charging	1 A
Bluetooth Version	V2.1 + EDR/support APT-X
Bluetooth Frequency Band	2.4 GHz ~ 2.48 GHz ISM Band
Bluetooth Range	10 m (free space)
Tuner Tuning Range	87.5-108 MHz
Tuner Tuning Grid	50 KHz
Connector type	RCA connector
Subwoofer recommendation	
RMS power	100W@10%THD
Frequency response	30Hz~200Hz
Input impedance	>22K
AC Power	100-240V~, 50/60 Hz
Operation Power Consumption	50 W
Eco Standby Power Consumption	<0.5 W
Dimensions	
- Main Unit (W x H x D)	230 x 145 x 240 mm
- Speaker Box (W x H x D)	173 x 261 x 241 mm
Weight	
- Main Unit	2.9 kg
- Speaker Box	2 x 3.1 kg

EN

1 Important

Safety



This bolt of lightning indicates uninsulated material within the device may cause an electrical shock. For the safety of everyone in your household, please do not remove the covering.

The exclamation mark calls attention to features for which you should read the enclosed literature closely to prevent operating and maintenance problems.

WARNING: To reduce the risk of fire or electric shock, the device should not be exposed to rain or moisture and objects filled with liquids, such as vases, should not be placed on the device.

CAUTION: To prevent electric shock, fully insert the plug. (For regions with polarized plugs: To prevent electric shock, match wide blade to wide slot.)

Important Safety Instructions

- Follow all instructions.
- Heed all warnings.
- Do not use this device near water.
- Clean only with dry cloth.
- Do not block any ventilation openings. Install in accordance with the manufacturer's instructions.
- Do not install near any heat sources such as radiators, heat registers, stoves, or other devices (including amplifiers) that produce heat.
- Protect the power cord from being walked on or pinched, particularly at plugs, convenience receptacles, and the point where they exit from the device.
- Only use attachments/accessories specified by the manufacturer.
- Use only with the cart, stand, tripod, bracket, or table specified by the manufacturer or sold with the device.
- When a cart is used, use caution when moving the cart/device combination to avoid injury from tip-over.
- Unplug this device during lightning storms or when unused for long periods of time.
- Refer all servicing to qualified service personnel. Servicing is required when the device has been damaged in any way, such as power-supply cord or plug is damaged, liquid has been spilled or objects have fallen into the device, the device has been exposed to rain or moisture, does not operate normally, or has been dropped.
- Battery usage **CAUTION** –To prevent battery leakage which may result in bodily injury, property damage, or damage to the unit:
 - Install all batteries correctly, + and - as marked on the unit.
 - Do not mix batteries (old and new or carbon and alkaline, etc.).
 - Batteries (packed or installed) shall not be exposed to excessive heat such as sunshine, fire or the like.
 - Remove batteries when the unit is not used for a long time.
- The device shall not be exposed to dripping or splashing.
- Do not place any sources of danger on the device (e.g. liquid filled objects, lighted candles).
- Where the MAINS plug or an appliance coupler is used as the disconnect device, the disconnect device shall remain readily operable.

Warning

- Never remove the casing of this device.
- Never lubricate any part of this device.
- Never place this device on other electrical equipment.
- Keep this device away from direct sunlight, naked flames or heat.
- Never look into the laser beam inside this device.
- Ensure that you always have easy access to the power cord, plug, or adaptor to disconnect this device from the power.

Hearing safety



Caution

- To prevent possible hearing damage, do not listen at high volume levels for long periods.

Listen at a moderate volume:

- Using headphones at a high volume can impair your hearing. This product can produce sounds in decibel ranges that may cause hearing loss for a normal person, even for exposure less than a minute. The higher decibel ranges are offered for those that may have already experienced some hearing loss.
- Sound can be deceiving. Over time your hearing 'comfort level' adapts to higher volumes of sound. So after prolonged listening, what sounds 'normal' can actually be loud and harmful to your hearing. To guard against this, set your volume to a safe level before your hearing adapts and leave it there.

To establish a safe volume level:

- Set your volume control at a low setting.
- Slowly increase the sound until you can hear it comfortably and clearly, without distortion.

Listen for reasonable periods of time:

- Prolonged exposure to sound, even at normally 'safe' levels, can also cause hearing loss.
- Be sure to use your equipment reasonably and take appropriate breaks.

Be sure to observe the following guidelines when using your headphones.

- Listen at reasonable volumes for reasonable periods of time.
- Be careful not to adjust the volume as your hearing adapts.
- Do not turn up the volume so high that you can't hear what's around you.
- You should use caution or temporarily discontinue use in potentially hazardous situations.
- Do not use headphones while operating a motorized vehicle, cycling, skateboarding, etc.; it may create a traffic hazard and is illegal in many areas.

2 Notice

Any changes or modifications made to this device that are not expressly approved by WOOX Innovations may void the user's authority to operate the equipment.

Disposal of your old product

Your product is designed and manufactured with high quality materials and components, which can be recycled and reused. Do not throw away the product with the normal household waste at the end of its life, but hand it in at an official collection point or recycling. By doing this, you help to preserve the environment.

Environmental information

All unnecessary packaging has been omitted. We have tried to make the packaging easy to separate into three materials: cardboard (box), polystyrene foam (buffer) and polyethylene (bags, protective foam sheet). Your system consists of materials which can be recycled and reused if disassembled by a specialized company. Please observe the local regulations regarding the disposal of packaging materials, exhausted batteries and old equipment.

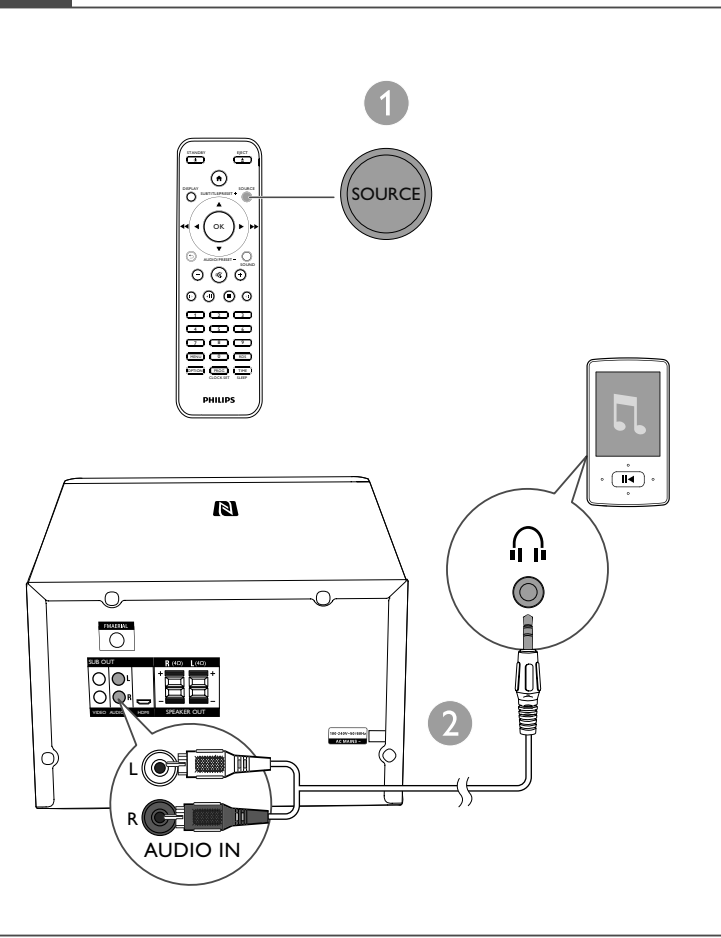
This item incorporates copy protection technology that is protected by U.S. patents and other intellectual property rights of Rovi Corporation. Reverse engineering and disassembly are prohibited.

The Bluetooth® word mark and logos are registered trademarks owned by Bluetooth SIG, Inc. and any use of such marks by Philips is under license.

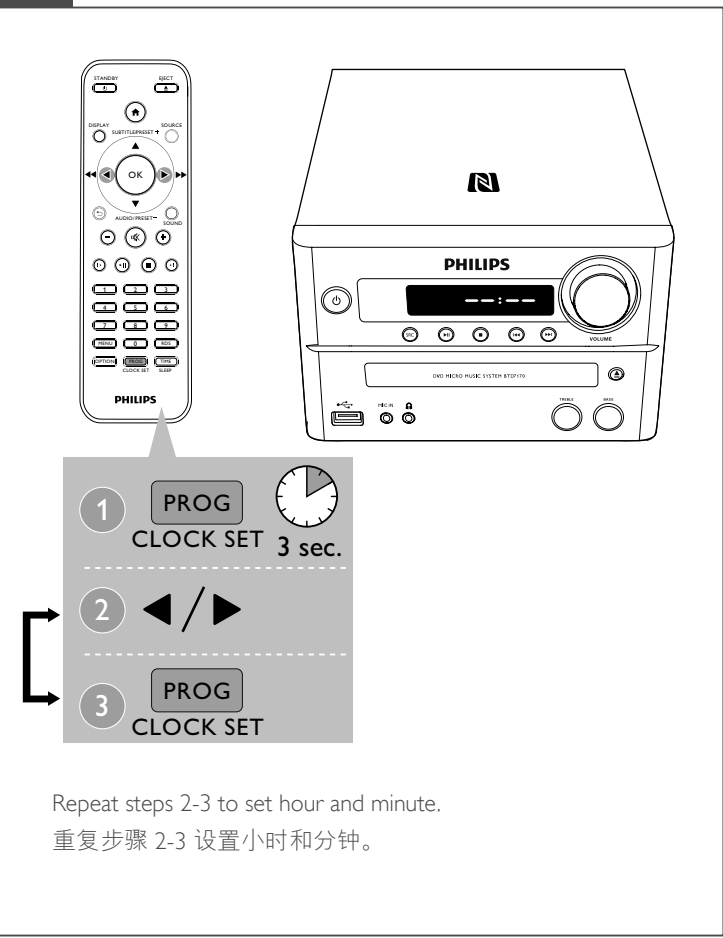
The N Mark is a trademark or registered trademark of NFC Forum, Inc. in the United States and in other countries.

HDMI and HDMI logo, and High-Definition Multimedia Interface are trademarks or registered trademarks of HDMI licensing LLC in the United States and other countries.

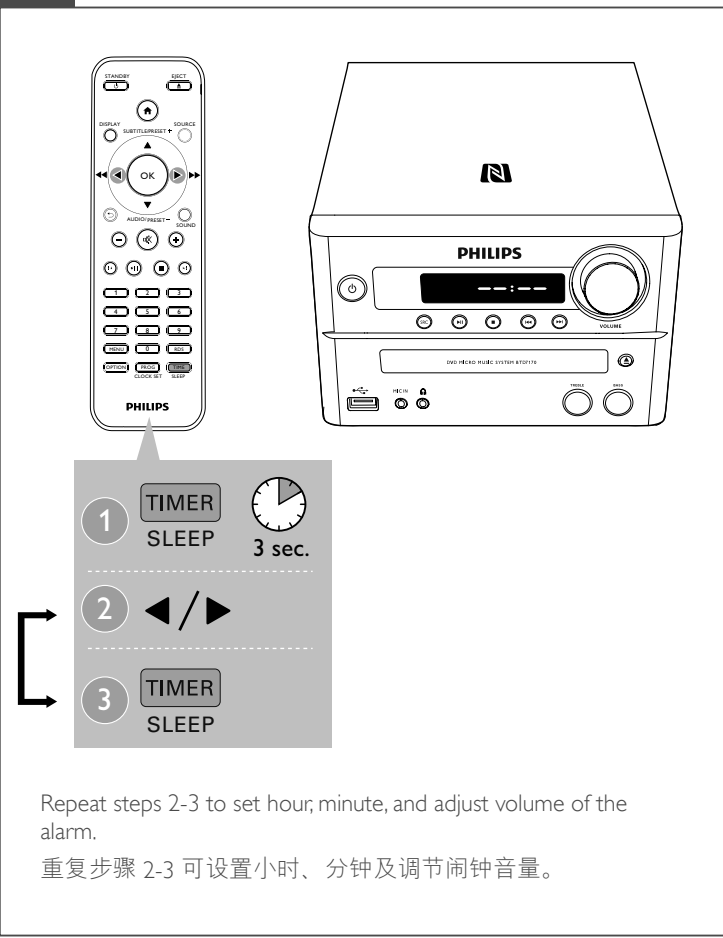
'DVD Video' is a trademark of DVD Format/Logo Licensing Corporation.



- Supported disc formats
- Digital Video Discs (DVDs)
 - Video CDs (VCDs)
 - Super Video CDs (SVCDs)
 - Digital Video Discs + Rewritable (DVD+RW)
 - Compact Discs (CDs)
 - Picture (Kodak, JPEG) files on CDR(W)
 - DivX(R) disc on CD-R(W):
 - DivX 3.11, 4.x and 5.x
- Supported MP3-CD formats
- ISO 9660
 - Max. title/album name: 12 characters
 - Max. title number plus album: 255.
 - Max. nested directory: 8 levels.
 - Max. album number: 32.
 - Max. MP3 track number: 999.
 - Supported sampling frequencies for MP3 disc: 32 kHz, 44.1 kHz, 48 kHz.
 - Supported Bit-rates of MP3 disc are: 32, 64, 96, 128, 192, 256 (kbps).
- Compatible USB devices
- USB flash memory (USB2.0 or USB1.1)
 - USB flash players (USB2.0 or USB1.1)
 - memory cards (requires an additional card reader to work with this unit)
- Supported USB formats
- USB or memory file format: FAT12, FAT16, FAT32 (sector size: 512 bytes)
 - MP3 bit rate (data rate): 32-320 Kbps and variable bit rate
 - Directory nesting up to a maximum of 8 levels
 - Number of albums/ folders: maximum 99
 - Number of tracks/titles: maximum 999
 - ID3 tag v2.0 or later
 - File name in Unicode UTF8 (maximum length: 32 bytes)



Repeat steps 2-3 to set hour and minute.
重复步骤 2-3 设置小时和分钟。



Repeat steps 2-3 to set hour, minute, and adjust volume of the alarm.
重复步骤 2-3 可设置小时、分钟及调节闹钟音量。

部件名称 Name of the Parts	有毒有害物质或元素 Hazardous/toxic Substance					
	铅 (Pb, Lead)	汞 (Hg, Mercury)	镉 (Cd, cadmium)	六价铬 (Chromium 6+)	多溴联苯 (PBB)	多溴二苯醚 (PBDE)
Housing 外壳	O	O	O	O	O	O
LCD Panel 液晶面板	X	X	O	O	O	O
Loudspeakers 喇叭单元	O	O	O	O	O	O
PWBs 电路板组件	X	O	O	O	O	O
Accessories (Remote control & cables) 附件 (遥控器、电源线、连接线)	X	O	O	O	O	O
Batteries in Remote Control (Zn-C) 遥控器电池	X	O	O	O	O	O

本表格依据SJ/T 11364的规定编制。

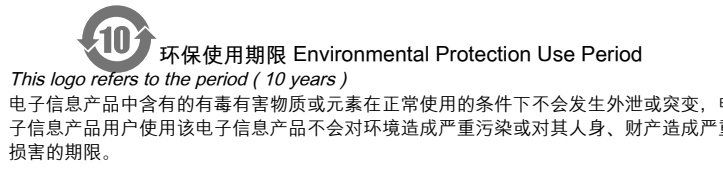
The table is compiled according to SJ/T 11364.

O: 表示该有毒有害物质在该部件所有均质材料中的含量均在 GB/T 26572 标准规定的限量要求以下。

X: Indicates that this toxic or hazardous substance contained in all of the homogeneous materials for this part is below the limit requirement in GB/T 26572.

X: 表示该有毒有害物质至少在部件的某一均质材料中的含量超出 GB/T 26572 标准规定的限量要求。

X: Indicates that this toxic or hazardous substance contained in at least one of the homogeneous materials used for this part is above the limit requirement in GB/T 26572.



This logo refers to the period (10 years) during which the toxic or hazardous substances or elements contained in electronic information products will not leak or mutate so that the use of these [substances or elements] will not result in any severe environmental pollution, any bodily injury or damage to any assets.

本商品采用版权保护技术，受美国 专利和 Rovi Corporation 的其它知识产权保护。禁止反向工程或反汇编。
蓝牙® 词汇和标识均为 Bluetooth SIG, Inc. 所有，Philips 对这些词汇和标识的任何使用均属合法。

N 标志是 NFC Forum, Inc. 在美国及其他国家/地区的商标或注册商标。

HDMI、HDMI 徽标和高清多媒体接口是 HDMI licensing LLC 在美国及其他国家或地区的商标或注册商标。

“DVD Video” 是 DVD Format/Logo Licensing Corporation 的商标。

关于 DIVX 视频：DivX® 是由 Rovi Corporation 的子公司 DivX, LLC 创建的一种数字视频格式。 这是通过 DivX Certified® 官方认证的可播放 DivX 视频的设。有关更多信息以及将文件转换为 DivX 视频的软件工具，请访问 divx.com。关于 DIVX 随选视频：这款 DivX Certified® 设备必须注册，才能播放付费的 DivX 视频点播 (VOD) 影片。 要获得注册码，请在设备设置菜单中找到 DivX VOD 部分。 有关如何完成注册的更多信息，请转到 vod.divx.com。DivX®、DivX Certified® 及相关徽标是 Rovi Corporation 或其子公司的商标，并在授权下使用。

在杜比实验室许可下制造。Dolby 和双 D 标志为杜比实验室的注册商标。

本装置包括此标签：



注

- 铭牌（铭牌上的信息包括工作电压和消耗功率）位于主机背面，使用前请先了解铭牌上的相关信息。

ABOUT DIVX VIDEO: DivX® is a digital video format created by DivX, LLC, a subsidiary of Rovi Corporation. This is an official DivX Certified® device that plays DivX video. Visit divx.com for more information and software tools to convert your files into DivX videos. ABOUT DIVX VIDEO-ON-DEMAND: This DivX Certified® device must be registered in order to play purchased DivX Video-on-Demand (VOD) movies. To obtain your registration code, locate the DivX VOD section in your device setup menu. Go to vod.divx.com for more information on how to complete your registration.

Manufactured under license from Dolby Laboratories. "Dolby" and the double-D symbol are trademarks of Dolby Laboratories.

This apparatus includes this label:



Note

- The type plate is located on the back of the device.

ZH-CN

1 注意事项

安全

了解这些安全标志



此“闪电标志”表示设备中的未绝缘材料可能导致触电。为了您家中每个人的安全，请勿卸下产品外壳。

“惊叹号”表示需要对某些功能多加注意，您应仔细阅读附带的说明书以防止出现操作和维护问题。

警告：为减少火灾或触电危险，此设备应避免淋雨或受潮，不得将装有液体的物体（如花瓶）放在此设备上。

注意：为防止触电，请完成插入插头。（对于具有极化插头的区域：为防止触电，请将宽插头插入宽插座。）

重要安全说明

- 遵循所有说明。
- 注意所有警告。
- 不要在靠近水的地方使用本设备。
- 只能使用干布进行清洁。
- 不要堵塞任何通风口。按照制造商的说明进行安装。
- 不要在任何热源附近安装，如散热器、蓄热器、炉具或其它发热设备（包括功放器）。
- 防止电源线被踩踏或挤压，特别是在插头、电源插座和设备电源线出口位置。
- 仅使用制造商指定的附件/配件。
- 仅使用制造商指定或随设备销售的手推车、支架、三脚架、支架或桌面。使用手推车时，请小心移动载有产品的手推车/设备，以避免翻倒造成伤害。
- 在雷电天气期间或长期不用的情况下，请拔下本设备的电源插头。
- 所有维修均应由合格的维修人员来执行。本设备有任何损坏时，如电源线或插头损坏、液体泼溅到或物体跌落到设备上，设备淋雨或受潮，无法正常运行，或者跌落，均需要进行维修。
- 电池使用注意事项 – 为防止电池泄漏而造成人身伤害、财产损失或装置损坏，请：
 - 按照装置上标明的 + 极和 - 极，正确安装所有电池。
 - 请勿混合使用电池（旧电池与新电池或碳电池与碱性电池，等等）。

