

Presentation hub for wireless video

WIFI2HDVGA
WIFI2HDVGAGE



*actual product may vary from photos

IMPORTANT! Please keep this manual,
it contains your Software Product Code.

DE: Bedienungsanleitung - de.startech.com

FR: Guide de l'utilisateur - fr.startech.com

ES: Guía del usuario - es.startech.com

IT: Guida per l'uso - it.startech.com

NL: Gebruiksaanwijzing - nl.startech.com

PT: Guia do usuário - pt.startech.com

For the most up-to-date information, please visit: www.startech.com

FCC Compliance Statement

This equipment has been tested and found to comply with the limits for a Class B digital device, pursuant to part 15 of the FCC Rules. These limits are designed to provide reasonable protection against harmful interference in a residential installation. This equipment generates, uses and can radiate radio frequency energy and, if not installed and used in accordance with the instructions, may cause harmful interference to radio communications. However, there is no guarantee that interference will not occur in a particular installation. If this equipment does cause harmful interference to radio or television reception, which can be determined by turning the equipment off and on, the user is encouraged to try to correct the interference by one or more of the following measures:

- Reorient or relocate the receiving antenna.
- Increase the separation between the equipment and receiver.
- Connect the equipment into an outlet on a circuit different from that to which the receiver is connected.
- Consult the dealer or an experienced radio/TV technician for help

This device complies with part 15 of the FCC Rules. Operation is subject to the following two conditions: (1) This device may not cause harmful interference, and (2) this device must accept any interference received, including interference that may cause undesired operation.

Changes or modifications not expressly approved by StarTech.com could void the user's authority to operate the equipment.

Industry Canada Statement

This Class B digital apparatus complies with Canadian ICES-003.

Cet appareil numérique de la classe [B] est conforme à la norme NMB-003 du Canada.

CAN ICES-3 (B)/NMB-3(B)

This device complies with Industry Canada licence-exempt RSS standard(s).

Operation is subject to the following two conditions:

- (1) This device may not cause interference, and
- (2) This device must accept any interference, including interference that may cause undesired operation of the device.

Le présent appareil est conforme aux CNR d'Industrie Canada applicables aux appareils radio exempts de licence.

L'exploitation est autorisée aux deux conditions suivantes:

- (1) l'appareil ne doit pas produire de brouillage, et
- (2) l'utilisateur de l'appareil doit accepter tout brouillage radioélectrique subi, même si le brouillage est susceptible d'en compromettre le fonctionnement.

IC Radiation Exposure Statement

This equipment complies with IC RSS-102 radiation exposure limit set forth for an uncontrolled environment. This equipment should be installed and operated with minimum distance 0.5cm between the radiator and your body.

Déclaration d'exposition à la radiation

Cet équipement respecte les limites d'exposition aux rayonnements IC définies pour un environnement non contrôlé. Cet équipement doit être installé et mis en marche à une distance minimale de 0.5 cm qui sépare l'élément rayonnant de votre corps.

L'émetteur ne doit ni être utilisé avec une autre antenne ou un autre émetteur ni se trouver à leur proximité.

FCC ID: Z7ZMAXMEDIAWIFI2

IC: 11232A-WIFI2HDMC

The Country Code Selection feature is disabled for products marketed in the US/Canada

The device, for operation in the band 5150–5250 MHz is only for indoor use to reduce the potential for harmful interference to co-channel mobile satellite systems.

Use of Trademarks, Registered Trademarks, and other Protected Names and Symbols

This manual may make reference to trademarks, registered trademarks, and other protected names and/or symbols of third-party companies not related in any way to StarTech.com. Where they occur these references are for illustrative purposes only and do not represent an endorsement of a product or service by StarTech.com, or an endorsement of the product(s) to which this manual applies by the third-party company in question. Regardless of any direct acknowledgement elsewhere in the body of this document, StarTech.com hereby acknowledges that all trademarks, registered trademarks, service marks, and other protected names and/or symbols contained in this manual and related documents are the property of their respective holders.

Table of Contents

Introduction	2
Packaging Contents	2
System Requirements.....	2
Installation	3
Boardroom Collaboration mode	3
Wireless Display mode	7
Technical Support	9
Warranty Information	9

For full operational instructions please download the full product manual at www.StarTech.com/WIFI2HDVGA.

Introduction

Packaging Contents

- 1x Presentation hub
- 1x Power adapter
- 1x Quick install guide


System Requirements

- 1 x VGA or HDMI® display with cabling (i.e. television, projector)
- **For Boardroom Collaboration mode:**
One or more Wi-Fi enabled computers with:
 - Microsoft Windows® 8 / 8.1 (32/64), 7(32/64), Vista (32/64)
 - Apple® OSX Yosemite (10.10), Mavericks (10.9), Mountain Lion (10.8), Lion (10.7), Snow Leopard (10.6)
- **For Wireless Display Mode:**
1 x WiDi or Miracast enabled video source device (i.e. Smartphone, tablet, computer) with:
 - Microsoft Windows® 8 / 8.1 (32/64), 7(32/64), Vista (32/64)
 - Android (v.4.3 and above)

Operating system support is subject to change. For the latest requirements, please visit www.startech.com/WIFI2HDVGA

Installation

1. Using the required video cable (not included), connect the presentation hub to your VGA or HDMI display.
Note: The VGA and HDMI outputs cannot operate at the same time. If ports are connected to a display only the HDMI port will function.
2. Connect the included power adapter from your presentation hub to a power outlet.
3. Press the power button on the presentation hub, to turn it on.
4. After a few moments the main screen will be displayed.



The diagram is split into two columns. The left column features an icon of four people around a table with laptops and a central monitor. Below it is the heading 'Boardroom Collaboration' followed by text explaining that nScreenShare software allows a moderator to manage presentations. A 'Please note' section states that users must install the software. The right column features an icon of a monitor and a tablet, both with wireless signals. Below it is the heading 'Wireless Display' followed by text explaining that content can be shared wirelessly with Android or Surface devices, provided they support Miracast.

Boardroom Collaboration

With nScreenShare software installed on a Windows® or Mac computer, you can assign a moderator to select and rotate between presenters in the boardroom.

Please note:
Users in Boardroom collaboration mode must install nScreenShare software to connect.

Wireless Display

Share your content wirelessly with an Android™ device or Surface® Pro tablet. Please note: Your mobile device must support Miracast®.

StarTech.com | Presentation hub for wireless video collaboration

Boardroom Collaboration mode

Boardroom collaboration mode enables you to intuitively share your boardroom display between multiple computer systems.

Note: To share the display in Boardroom Collaboration mode, you must install the nScreenShare Software on any computer you intend to share the screen of.

Install nScreenShare on your computer

1. Download the latest version of the nScreenShare software from www.StarTech.com/WIFI2HDVGA.

Note: Please ensure you have extracted the zip file before continuing with the installation steps.

2. Run the nScreenShare application.
 - a. If you're installing the software on a Windows computer, locate and double click the setup file (Setup.exe) for the nScreenShare application. This file will be located in the Win directory of the downloaded file.
 - b. If you're installing the software on a Mac computer, locate and double click the software package (nScreenShare.pkg). This file will be located in the MacOS folder of the downloaded file.

Note: you will be prompted to enter a Mac Software Product Code, the code can be located on the back cover of this manual.
3. The setup wizard will appear once your system is ready. Please follow the on screen prompts to continue installation.
4. You will be prompted to click finish once the setup wizard has completed. You may also be prompted to restart your computer to complete the installation. Please click Finish followed by Yes on each respective window.

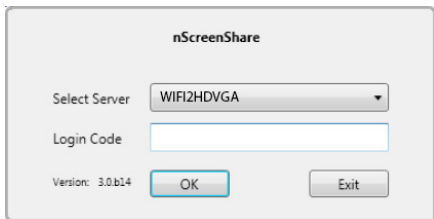
nScreenShare operation



1. Use the wireless NIC on your computer to connect to the presentation hub. The default SSID (Secure Set Identifier) for the presentation hub is WIFI2HDVGA.

2. Launch the nScreenShare application on your computer.

- a. Double click the icon for the nScreenShare, this will display a login screen with “Select Server” and “Login Code” dialog boxes.



Note: The Select Server dialog box will already be populated as the software will automatically detect your presentation hub through your Wireless NIC.

- b. Enter the Login Code that’s located on the launch screen of your HDMI display, and press OK, to launch the nScreenShare application.
3. Define an administrative computer by setting the nScreenShare application on that computer into Conference Mode.

Note: Once a user’s computer has been placed into Conference Mode, there are two types of roles within the software: Administration and client. It’s the administrator’s responsibility to control which client will be actively presenting their screen through the presentation hub.

- a. Using the computer you’d like to designate as the Administrator, click the menu icon  followed by Enable Conference Mode.



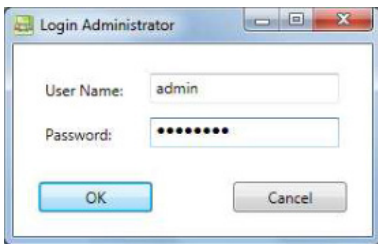
-> Enable Conference mode

- b. The first person to connect to the nScreenShare software, will automatically be programmed as Administration. A dialog box will appear requesting Administrator login credentials. Please enter the below information:

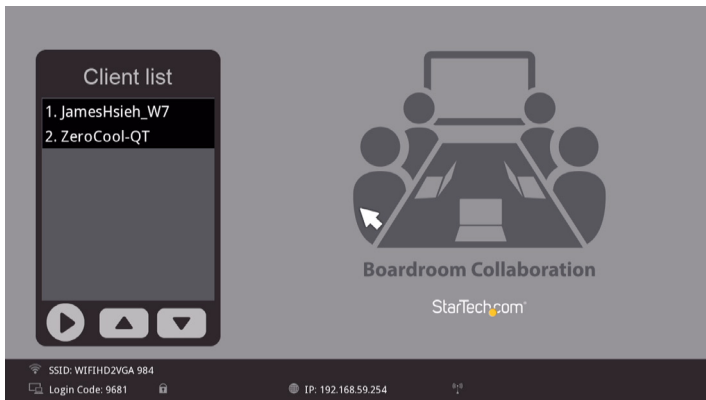
Username: admin

Password: adminpwd

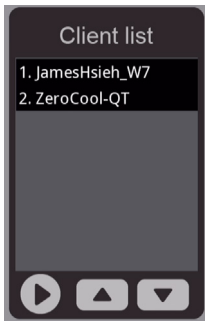
Then click okay.



The administrative screen will now launch on the administrators computer.



- Using the administrative computer, choose which client is displayed by selecting the device name for your preferred computer from the Client List on list.



This client is now sharing his or her screen with the boardroom display.

Wireless Display mode

(Miracast or WiDi enabled computer, smartphone or tablet required)

Wireless Display mode enables you to wirelessly share your HDMI Display with Miracast or WiDi enabled devices such as Android smartphones & tablets, and Windows® 8.1 laptops, Ultrabooks & Surface tablets – without installing additional software.



Note: Exact steps regarding Miracast setup will vary depending on your device and software. Please review the documentation included with your smartphone, tablet or computer for specific instructions. The following sections will indicate common examples of how to connect.

Android Device smartphone or tablet

1. Open the “Settings” menu.
2. Select “Display” “AllShare Cast”, “Screen Mirror”, “Wireless display” or “Cast screen” (depending on your model and version of Android device).
3. Turn “Wireless display” or “Cast screen” ON and select the device name from the list.
4. By default WIFI2HDVGA will be listed as the device name. Tap the device to connect.

The smartphone or tablet screen will now be shared on your display.

Wirelessly Connect using a WiDi enabled computer using the Intel® WiDi App

Note: If your computer system is running Windows 8.1 or higher, please see **Connect using a Wi-Fi enabled Computer with Windows 8.1 or Higher.**

1. Launch the WiDi application that is pre-installed on your Wi-Di-enabled computer system.
2. Select WIFI2HDVGA from the listed devices below the detected adapters list.
3. Click the “Connect” button.
4. The computer screen will now be shared on your display.

Connect using any Wi-Fi enabled Computer running Windows 8.1 or higher

Note: Please ensure the drivers for your graphics adapter and wireless adapter are up to date.

1. Launch the “Windows 8 Charms Bar” (Windows key + C) and select “Devices.”
2. Select “Project,” then “Add a wireless display.”
3. If you are prompted for a PIN code, enter the PIN code that pops up on the launch screen and click “Next”.
4. The computer screen will now be shared on your HDMI-enabled display device.

Technical Support

StarTech.com's lifetime technical support is an integral part of our commitment to provide industry-leading solutions. If you ever need help with your product, visit www.startech.com/support and access our comprehensive selection of online tools, documentation, and downloads.

For the latest drivers/software, please visit www.startech.com/downloads

Warranty Information

This product is backed by a two year warranty.

In addition, StarTech.com warrants its products against defects in materials and workmanship for the periods noted, following the initial date of purchase. During this period, the products may be returned for repair, or replacement with equivalent products at our discretion. The warranty covers parts and labor costs only. StarTech.com does not warrant its products from defects or damages arising from misuse, abuse, alteration, or normal wear and tear.

Limitation of Liability

In no event shall the liability of StarTech.com Ltd. and StarTech.com USA LLP (or their officers, directors, employees or agents) for any damages (whether direct or indirect, special, punitive, incidental, consequential, or otherwise), loss of profits, loss of business, or any pecuniary loss, arising out of or related to the use of the product exceed the actual price paid for the product. Some states do not allow the exclusion or limitation of incidental or consequential damages. If such laws apply, the limitations or exclusions contained in this statement may not apply to you.

Hard-to-find made easy. At StarTech.com, that isn't a slogan. It's a promise.

StarTech.com is your one-stop source for every connectivity part you need. From the latest technology to legacy products — and all the parts that bridge the old and new — we can help you find the parts that connect your solutions.

We make it easy to locate the parts, and we quickly deliver them wherever they need to go. Just talk to one of our tech advisors or visit our website. You'll be connected to the products you need in no time.

Visit www.startech.com for complete information on all StarTech.com products and to access exclusive resources and time-saving tools.

StarTech.com is an ISO 9001 Registered manufacturer of connectivity and technology parts. StarTech.com was founded in 1985 and has operations in the United States, Canada, the United Kingdom and Taiwan servicing a worldwide market.