

Register your product and get support at

www.philips.com/welcome

D600

D605



Short user manual

PHILIPS



Important safety instructions

Warning

- The Electrical network is classified as hazardous. The only way to power down the charger is to unplug the power supply from the electrical outlet. Ensure that the electrical outlet is always easily accessible.
- Refer to safety information before using the product.
- This product complies with European R&TTE directive 1999/5/EC
- Use only the power supply listed in the user instructions.
- Use only the batteries listed in the user instructions.
- Do not allow the product to come into contact with liquids.
- Risk of explosion if battery is replaced by an incorrect type.
- Dispose of used batteries according to the instructions.
- When the handset rings or when the handsfree is activated, keep the handset away from your ear to avoid hearing damage.

When using the phone as a baby monitor

- Children should be supervised to ensure that they do not play with the appliance.
- Make sure the baby unit and the cord are always out of reach of the baby (at least 1 metre/3 feet away).
- Keep the parent unit at least 1.5 metres/5 feet away from the baby unit to prevent acoustic feedback.
- Never place the baby unit inside the baby's bed or playpen.
- Never cover the parent unit and the baby unit with anything (e.g. a towel or blanket). Always make sure the cooling vents of the baby unit are free.
- This appliance is not intended for use by persons (including children) with reduced physical, sensory or mental capabilities, or lack of experience and knowledge, unless they have been given supervision or instruction concerning use of the appliance by a person responsible for their safety.
- If you place the parent unit next to a transmitter or other DECT appliance (e.g. a DECT telephone or wireless router for the internet), the connection

with the baby unit may be lost. Move the baby monitor further away from the other wireless appliances until the connection is restored.

- This baby monitor is intended as an aid. It is not a substitute for responsible and proper adult supervision and should not be used as such.

1 Overview

In call

- Enter the option menu
- Adjust the volume
- End calls
- Turn the speaker on/off
- Mute/unmute the microphone
- Enter a pause

Standby

- Access the main menu
- Phonebook
- Call log
- Make and receive calls
- Make intercom call
- Lock/unlock the keypad.
- Make and receive calls

In menu

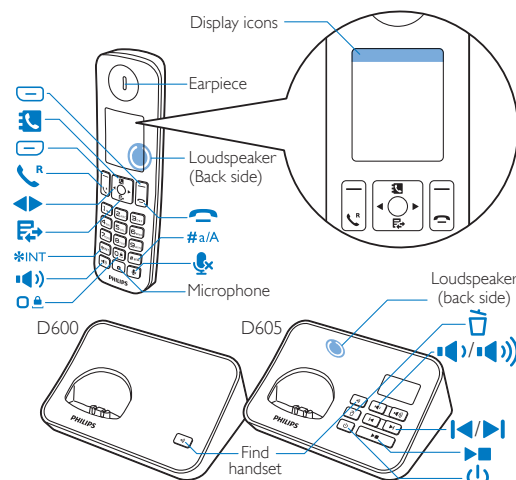
- Confirm / Enter the option menu / Select
- Cancel
- Up / down
- Exit menu

In text input

- Delete text
- Enter a space
- Switch upper/lower case
- Left / right

Main menu icons

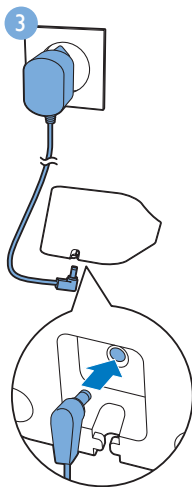
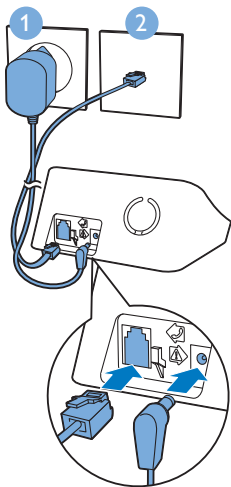
- Phonebook
- Phone setup
- Services
- Baby monitor
- Alarm
- Incoming calls (D600 only)
- Answer machine (D605 only)



Display icons

- The number of bars indicates the connection status between the handset and base station. The more bars are shown, the better the signal strength is.
- This icon indicates missed calls on the standby screen or in the incoming call list. It changes color from red to white after reviewing calls.
- The alarm is activated.
- The silent mode is set, but is outside of active period.
- The ringer is off. The silent mode is set and within active period (the phone does not ring).
- D605 only: Answering machine: it flashes when there is a new message. It remains steadily on when the telephone answering machine is turned on.
- Voice messages indicator: flashes for new messages, is steady for reviewed messages.
* This is network dependent
- ECO The ECO mode is activated.
- ECO+ The ECO+ mode is activated.

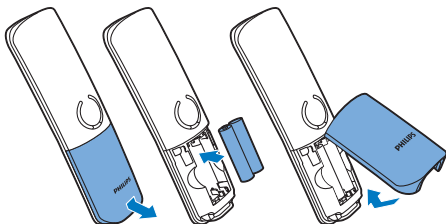
2 Connect



Multi-handset version
only.

3 Get started

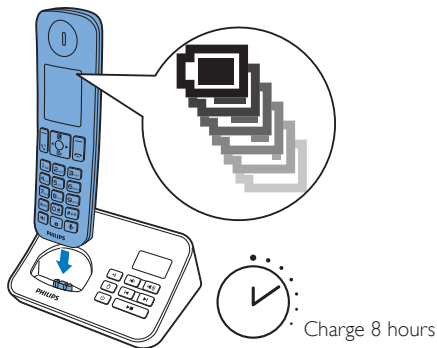
Insert batteries



Configure your phone

- 1 When using your phone for the first time, you see a welcome message (country dependent).
- 2 Set the country and language if prompted.
- 3 Set the date and time.
 - If the time is in 12-hour format, press ***INT** to select **[am]** or **[pm]** (country dependent).

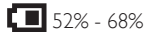
Charge your phone



> 84%



68% - 84%



52% - 68%



36% - 52%



18% - 36%



< 18%

Flashing: low battery

Scrolling: charging in progress

4 Enjoy

Phonebook

Add record

- 1 Press  > **[Option]** > **[Add new]**.
- 2 Follow on-screen instructions.

Call from the phonebook



- 1 Press .
- 2 Select a record and press .

Direct access memory


You have 9 direct access memories (Keys 1 to 9). To dial the saved phone number automatically, press and hold on the keys in standby mode. Depending on your country, keys 1 and 2 are preset to **[1_voicemail]** (voice mail number) and **[2_info svc]** (information service number) of your network operator respectively (network dependent).

Call log


Call from the call log

- 1 Press .
- 2 Select **[Incoming calls]** (for D605 only).
- 3 Select a record and press .

Add record

- 1 Press  > **[Incoming calls]** (for D605 only) > **[Option]** > **[Save number]**.
- 2 Follow on-screen instructions.

Delete record

- 1 Press  > **[Incoming calls]** (for D605 only) > **[Option]** > **[Delete]**.
- 2 Follow on-screen instructions.

Redial list

Call from the redial list

- 1 Press **[Redial]**.
- 2 Select a record and press .

Add record

- 1 Press **[Redial]** > **[Option]** > **[Save number]**.
- 2 Follow on-screen instructions.

Delete record



- 1 Press **[Redial]** > **[Option]** > **[Delete]**.
- 2 Follow on-screen instructions.

Record an announcement (for D605 only)

- 1 Select **[Menu]** >  > **[Announcement]**.
- 2 Follow on-screen instructions.

Register additional handsets

You can register additional handsets to the base station.

- 1 Select **[Menu]** >  > **[Register]**, then press **[OK]** to confirm.
- 2 Press and hold  on the base station for 5 seconds.
- 3 Enter the system PIN/passcode (0000).
- 4 Press **[OK]** to confirm the PIN/passcode.
↳ Registration is complete in less than 2 minutes.

Restore default settings

You can reset your phone settings to the original factory settings.

- 1 Select **[Menu]** >  > **[Reset]**, then press **[OK]** to confirm.
- 2 Follow on-screen instructions.

5

Learn more


Silent mode

Sets time during which the phone will not ring

 > **[Sounds]** > **[Silent mode]**

MySound

Customizes the sound of voices to your liking

 > **[Sounds]** > **[MySound]**

Eco mode

Reduces power consumption / transmission power;
reduces radiation and range by approximately 60%

 > **[Eco mode]**

Eco+ mode

Eliminates radiation in standby mode (causes 2
seconds ring delay, 50% shorter standby time)

 > **[ECO+ mode]**

Call barring

Prevents unwanted outgoing calls to selected
numbers

 > **[Call barring]**



Technical data

Battery

- Philips: 2 x AAA NiMH 1.2 V Rechargeable 550 mAh batteries

Use only the supplied batteries.

Adapter

Base and charger:

Philips:	MN-A102-U130	S003IB0600040
Input	100-240 V~ 50/60 Hz 200 mA	100-240 V~ 50/60 Hz 150 mA
Output	6 V 400 mA	6 V 400 mA

Phonebook with 100 entries

Call log with 50 entries

Talk time: 18 hours

Standby time: 250 hours



Note


- You can install a DSL (digital subscriber line) filter to prevent noise and caller ID problems caused by the DSL interference.
- You can find the Declaration of Conformity on www.p4c.philips.com.

? Frequently asked questions

No signal bar is displayed on the screen.




- The handset is out of range. Move it closer to the base station.
- If the handset displays **[Register your Handset]**, put the handset on the base until the signal bar appears.

If I fail to pair (register) the additional handsets to the base station, what do I do?

Your base memory is full. Access  >  >

[Unregister] to unregister the unused handsets and try again.

I have chosen a wrong language which I cannot read, what do I do?

- 1 Press  to go back to the standby screen.
- 2 Press  to access the main menu screen.
- 3 Select  then you see one of the following texts appear on the screen:

Language	Langue
Sprache	Lingua

- 4 Select it to access the language options.
- 5 Select your own language.

My handset is in searching status, what do I do?

- Make sure that the base station has power supply.
- Register the handset to the base station.
- Move the handset closer to the base station.

I cannot change the settings of my voice mail, what do I do?

The voice mail service is managed by your service provider but not the phone itself. Contact your service provider to change the settings.

No display

- Make sure the batteries are charged.
- Make sure there are power and phone connections.

The handset on the charger does not charge.

- Make sure the batteries are inserted correctly.
- Make sure the handset is placed properly on the charger. The battery icon animates when charging.
- Make sure the docking tone setting is turned on. When the handset is placed correctly on the charger, you can hear a docking tone.
- The charging contacts are dirty. Disconnect the power supply first and clean the contacts with a damp cloth.

- Purchase new ones with the same specifications.

Bad audio (crackles, echo, etc.)

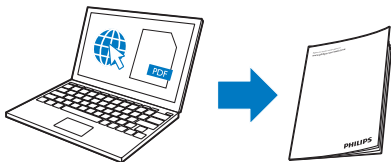
- The handset is nearly out of range. Move it closer to the base station.
- The phone receives interference from the nearby electrical appliances. Move the base station away from them.
- The phone is at a location with thick walls. Move the base away from them.

The handset does not ring.

Make sure the handset ringtone is turned on.

The caller ID does not display.

- The service is not activated. Check with your service provider.
- The caller's information is withheld or unavailable.



www.philips.com/support

For information, refer to the extended user documentation online.



CE 0168

Reproduction in whole or in part is prohibited without the written consent of the copyright owner. Trademarks are the property of Koninklijke Philips Electronics N.V. or their respective owners. All rights reserved.

© 2013 Koninklijke Philips Electronics N.V.



QSG_D600-605
05_EN_V1.0
WK12445